



**PUBLIC UTILITY DISTRICT NO. 1**  
**OF MASON COUNTY**  
N. 21971 Hwy. 101  
Shelton, Washington 98584

**BOARD OF COMMISSIONERS**  
MIKE SHEETZ, Commissioner  
JACK JANDA, Commissioner  
RON GOLD, Commissioner

## **Addendum No 1 – Community 2 Solar Project**

November 4, 2019

Attached you will find a copy of the floor plan, roof plan, roof framing plan and electrical plan as requested.

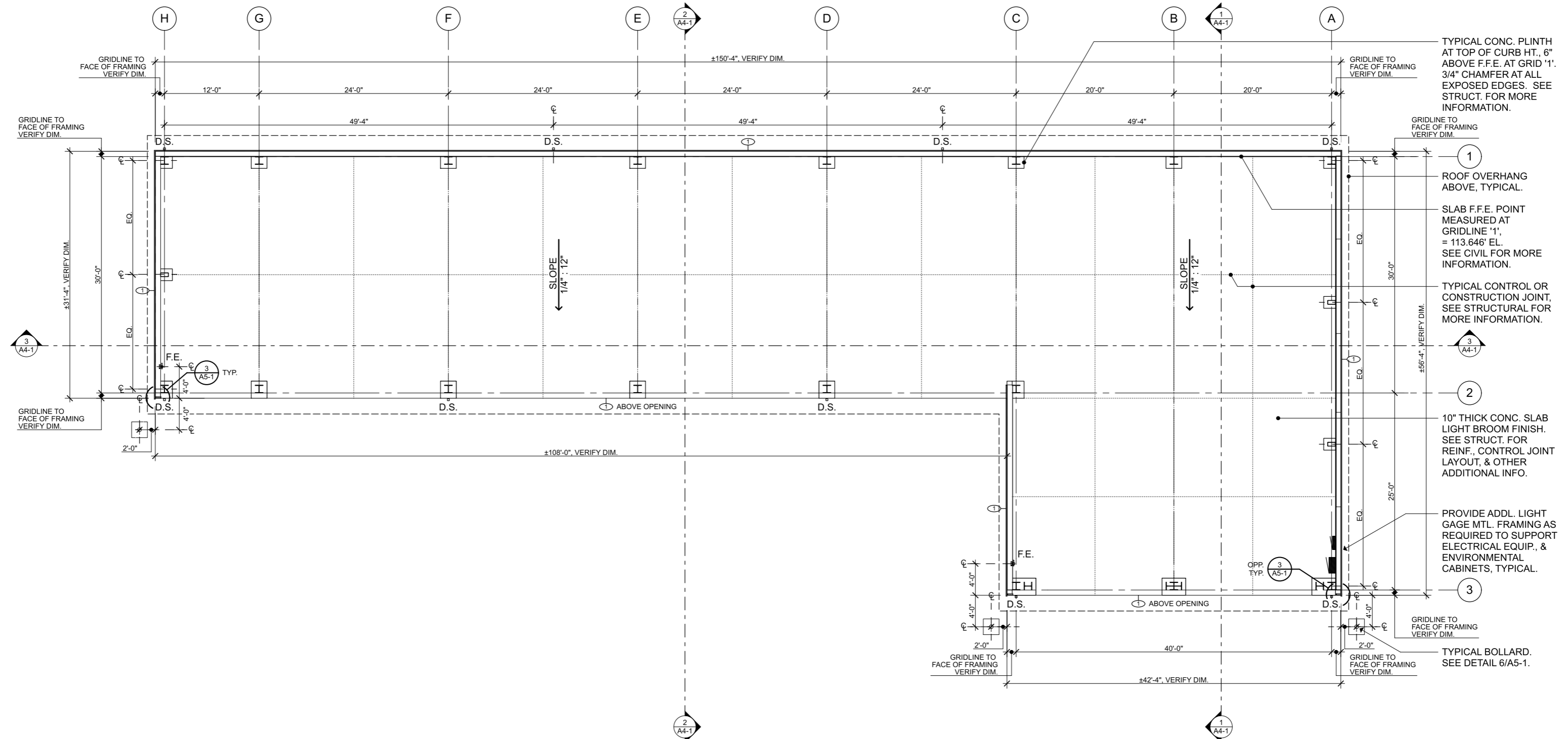
Julie

**GENERAL NOTES:**

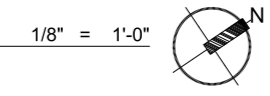
1. GRIDS '1', '2', AND '3' ARE TO FACE OF COLUMN. GRIDS 'A' THRU 'H' ARE TO CENTERLINE OF COLUMN. EXACT GIRT DEPTH DIMENSION PER PRE-ENGINEERED METAL BUILDING SUPPLIER. VERIFY AND ADJUST ALL OUTSIDE CURB / FOUNDATION AND ROOF OVERHANG DIMENSIONS ACCORDINGLY PER ACTUAL DEPTH.
2. SEE CIVIL FOR CONTINUATION OF SITE PLAN & HORIZONTAL CONTROL OF THE BUILDING.
3. SEE STRUCTURAL FOR ADDITIONAL INFORMATION NOT SHOWN HERE.
4. SEE ELECTRICAL FOR ADDITIONAL INFORMATION NOT SHOWN HERE.

**WALL TYPES LEGEND**

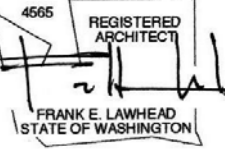
- TYPE 1: TYPICAL P.E.M.B. WALL SYSTEM
- VERTICAL METAL SIDING, PVDF FACTORY FINISH;
  - METAL HORIZ. GIRTS;



**1 FLOOR PLAN**



SIGNATURE...



OWNER...



**Mason County PUD #1  
 Covered Storage Building**

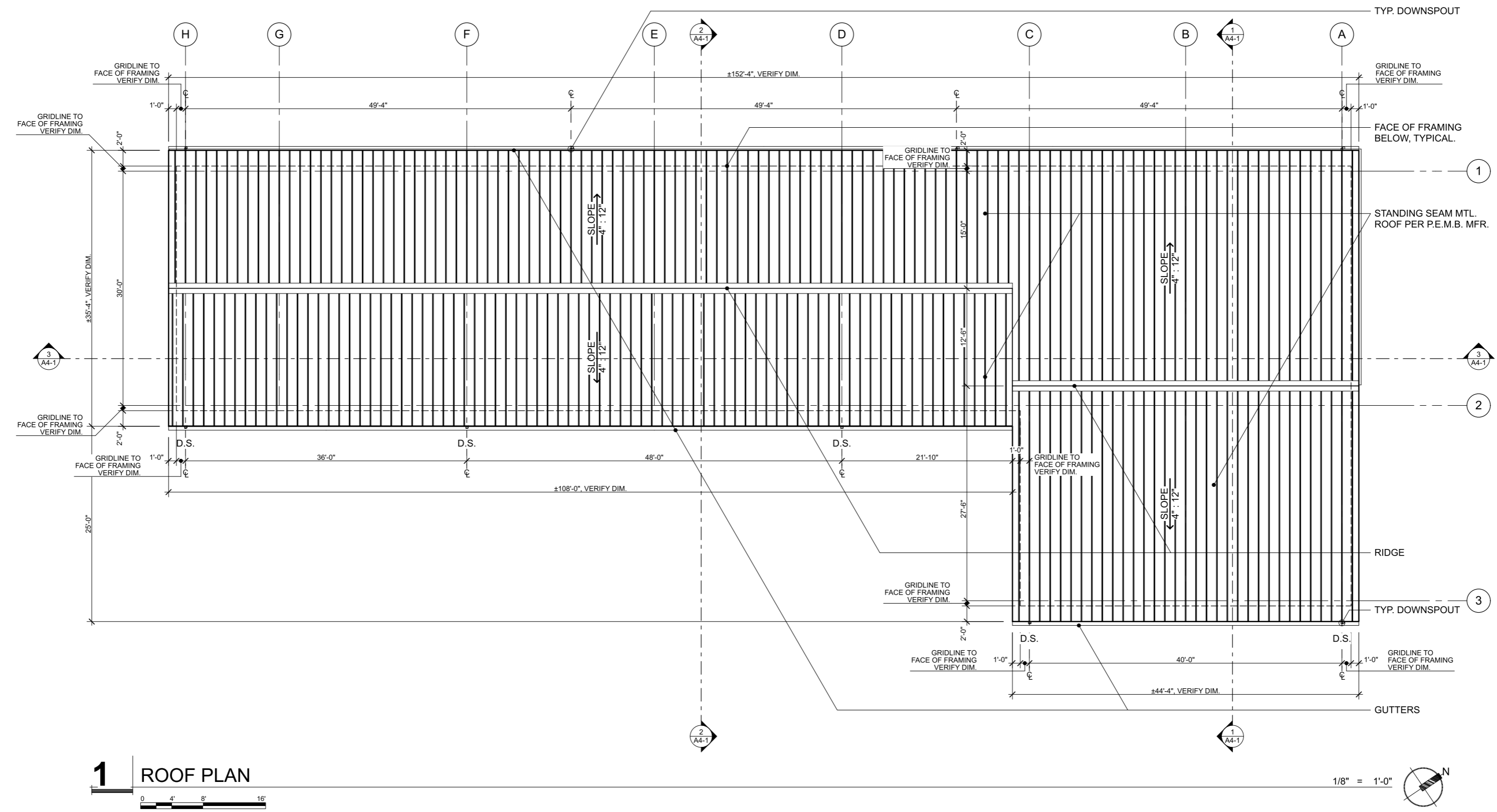
PHASE...  
**Phase II - Bid Set**

JOB NO...  
**18-01**

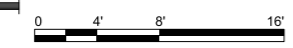
DATE...  
**2/7/19**

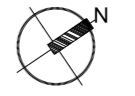
SHEET TITLE...  
**Floor Plan**

SHEET NO...



**1 ROOF PLAN**



1/8" = 1'-0" 

*Mason County PUD #1*  
**Covered Storage Building**

PHASE...  
**Phase II - Bid Set**  
 JOB NO...  
**18-01**  
 DATE...  
**2/7/19**  
 SHEET TITLE...  
**Roof Plan**  
 SHEET NO...

*Mason County PUD #1*  
**Covered Storage Building**

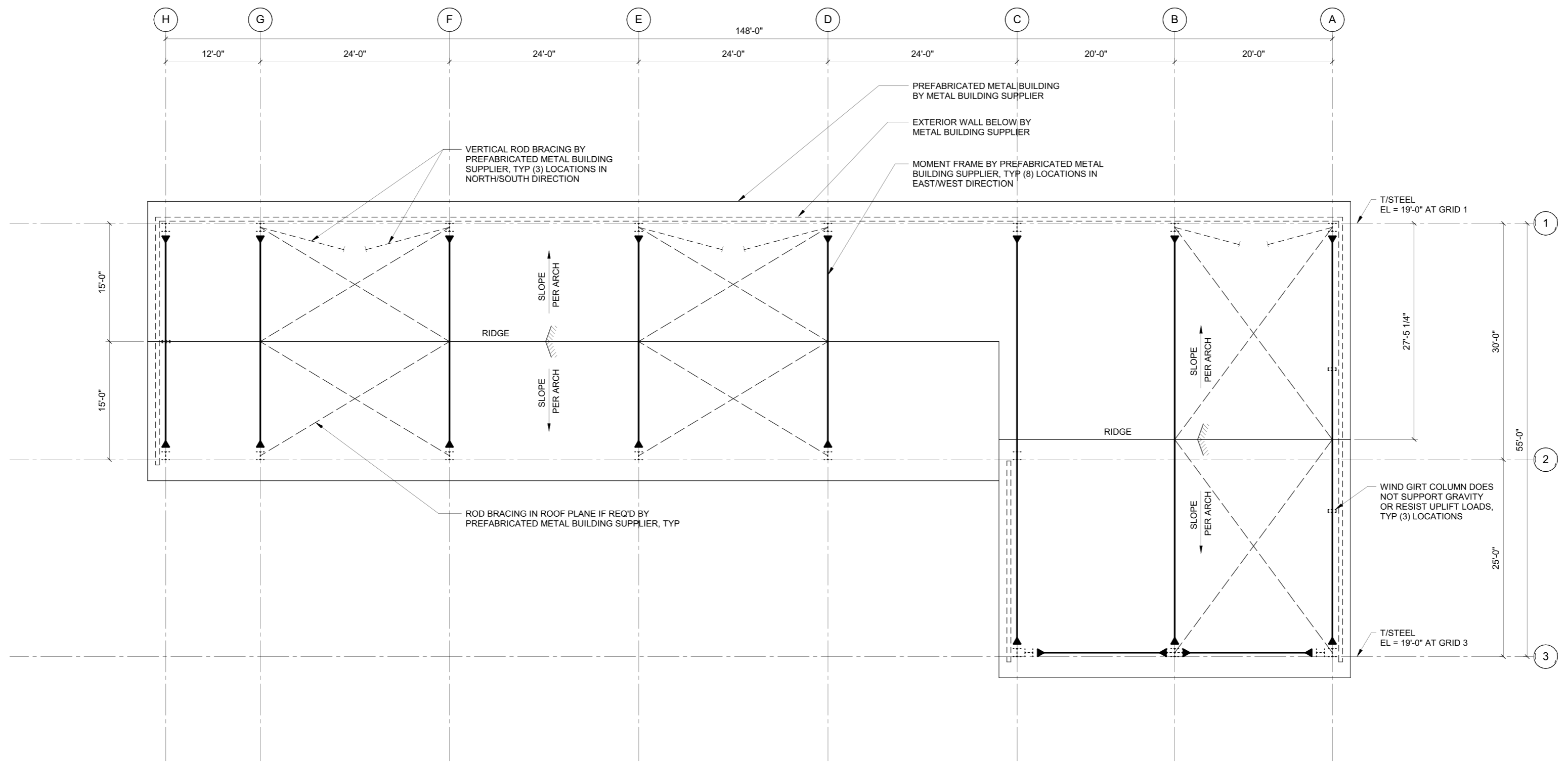
PHASE...  
 Phase II - Bid Set

JOB NO...  
 1800191

DATE...  
 2-07-19

SHEET TITLE...  
 ROOF FRAMING PLAN

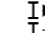
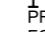
SHEET NO...  
**S2-2**



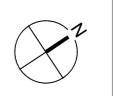
**GENERAL PLAN NOTES:**

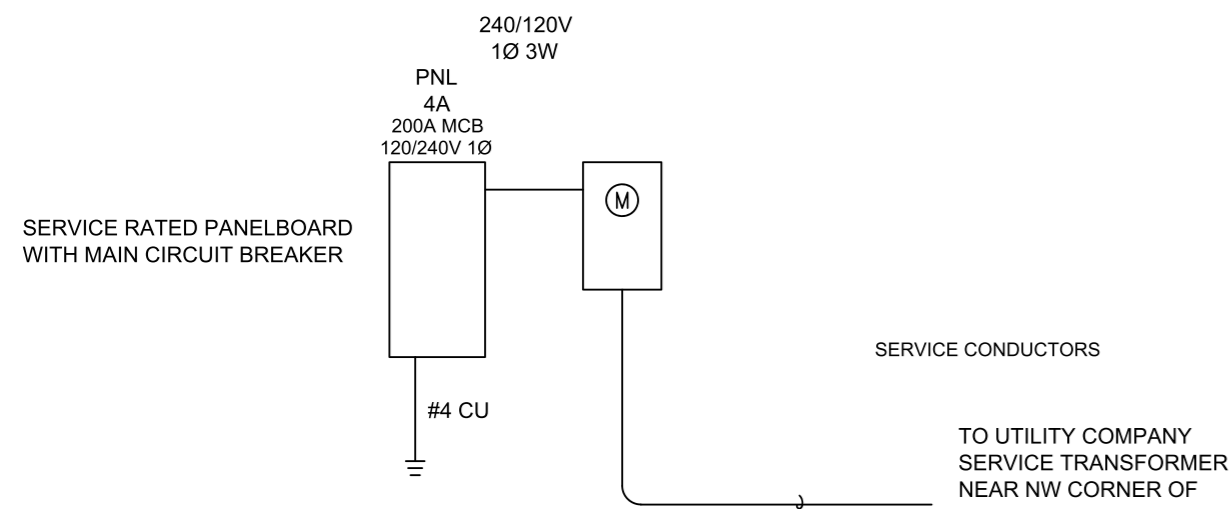
- G1. REFERENCE DRAWINGS:  
 S0-X - STRUCTURAL NOTES, SPECIAL INSPECTION SCHEDULE, SYMBOLS AND ABBREVIATIONS  
 S4-X - CONCRETE DETAILS

**ROOF FRAMING PLAN NOTES:**

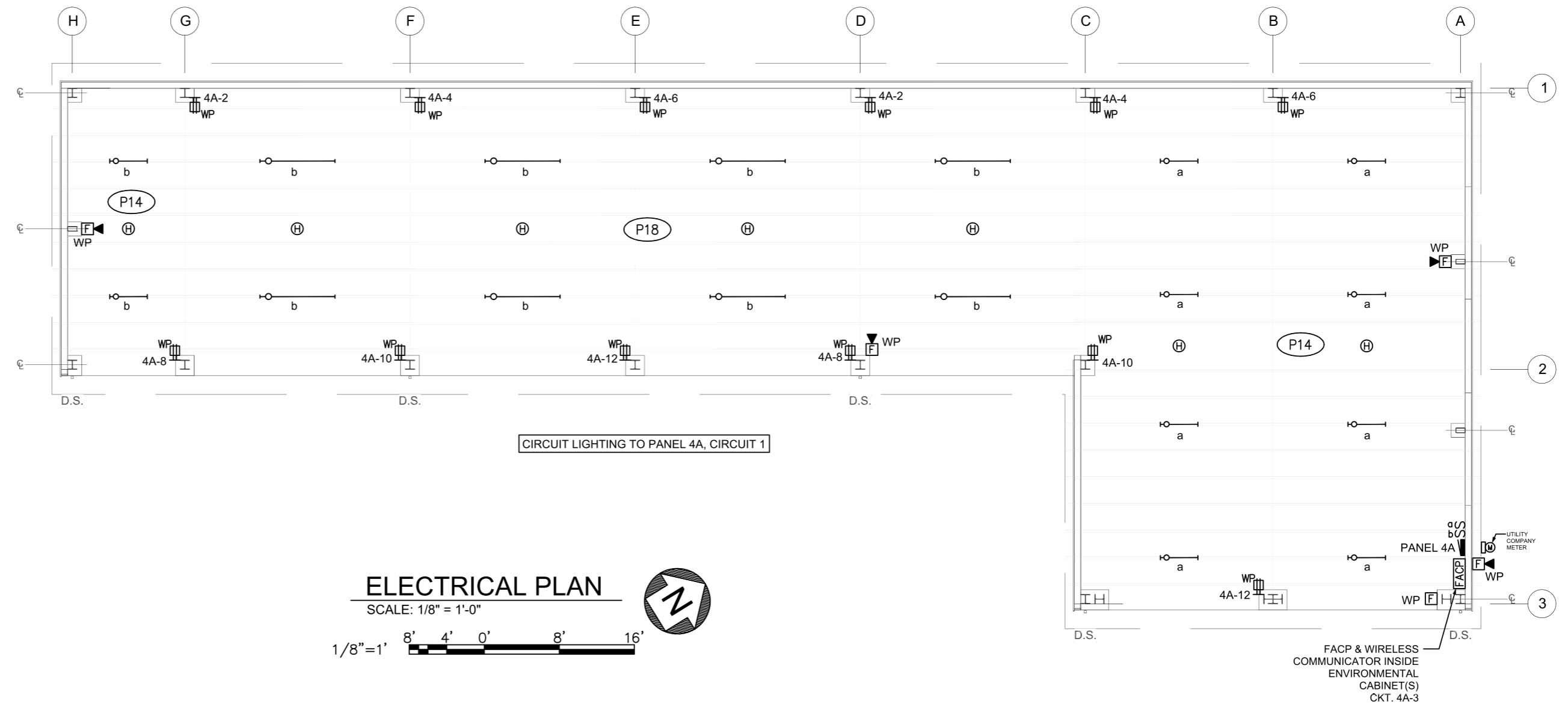
- R1. TOP OF STEEL ELEVATIONS NOTED OCCUR AT THE TOP OF PRIMARY STEEL FRAMING AND THE BOTTOM OF PURLIN. PRIOR TO CONSTRUCTION VERIFY PURLIN DEPTH WITH ARCHITECT.
- R2. PMB SUPPLIER TO DESIGN AND PROVIDE FRAMING TO BRACE INTERIOR AND EXTERIOR WALLS.
- R3. GENERAL CONTRACTOR TO COORDINATE WEIGHT AND SUPPORT REQUIREMENTS FOR OVERHEAD DOORS WITH METAL BUILDING MANUFACTURER.
- R4.  INDICATES STEEL MOMENT FRAME PER PMB SUPPLIER.
- R5.  INDICATES ROD BRACING PER PMB SUPPLIER.
- R6. PREFABRICATED METAL BUILDING SUPPLIER TO PROVIDE ROOF SUPPORT FOR MECHANICAL AND ELECTRICAL EQUIPMENT PER MECHANICAL AND ELECTRICAL DRAWINGS.

**1 ROOF FRAMING PLAN**  
 1/8" = 1'-0"





**ONE-LINE DISTRIBUTION DIAGRAM**  
SCALE: NTS



LIGHTING DESIGN CRITERIA: 10 FOOTCANDLES

**SERVICE RATED**

Panel '4A'		120/240V, 1Ph, 3W, 200A Bus with 200A Main Circuit Breaker Surface Mounted Load Center										22,000AIC
Ckt. No.	Description / Location	Load (VA)Type	C.B. A/Pole	Note	Ph.	Note	A/Pole	Load (VA)Type	Description / Location	Ckt. No.		
1	LTG - STORAGE BUILDING	1,095 L	20/1	A		20/1	360 R	RECPT - STORAGE		2		
3	FACTORY AND WIRELESS TRANSMITTER	300 G	20/1	C		20/1	360 R	RECPT - STORAGE		4		
5	FA ENVIRONMENTAL CABINETS	1,000 G	20/1	A		20/1	360 R	RECPT - STORAGE		6		
7	SPARE		20/1	C		20/1	360 R	RECPT - STORAGE		8		
9	SPARE		20/1	A		20/1	360 R	RECPT - STORAGE		10		
11	SPARE		20/1	C		20/1	360 R	RECPT - STORAGE		12		
13	SPACE			A				SPACE		14		
15	SPACE			C				SPACE		16		
17	SPACE			A				SPACE		18		
19	SPACE			C				SPACE		20		
21	SPACE			A				SPACE		22		
23	SPACE			C				SPACE		24		
25	SPACE			A				SPACE		26		
27	SPACE			C				SPACE		28		
29	SPACE			A				SPACE		30		
31	SPACE			C				SPACE		32		
33	SPACE			A				SPACE		34		
35	SPACE			C				SPACE		36		
37	SPACE			A				SPACE		38		
39	SPACE			C				SPACE		40		
Connected Load:		Ph. C	1,580 VA	13 Amps	Sub-Fed Connected Load:		0.0 KVA	0.0 Amps	Total Demand Load:		5.0 KVA	21.0 Amps
Notes:												
1.												
2.												
3.												
4.												
5.												

LUMINAIRE SCHEDULE							
TYPE	DESCRIPTION	MANUFACTURER	LAMP	VOLTAGE	INPUT WATTS	BALLAST/ DRIVER	REMARKS
P14	SURFACE CEILING MOUNT, 4 FT LINEAR LED ENCLOSED AND GASKETED FIXTURE, RIBBED FROSTED ACRYLIC LENS, INTEGRAL OCCUPANCY / DAYLIGHT SENSOR AND HAND HELD REMOTE, IP65 RATED	COLUMBIA LXEM SERIES	LED 3500K 5100 LUMEN	UNV	42		
P18	SAME DESIGN AND MANUFACTURE AS FIXTURE P14 EXCEPT 8 FT LENGTH	COLUMBIA LXEM SERIES	LED 3500K 10200 LUMEN	UNV	84		

- NOTES:
- LED LUMENS ARE BASED ON TOTAL ILLUMINATION OUTPUT OF THE LUMINAIRE UNLESS OTHERWISE INDICATED.
  - VERIFY STEM, CHAIN, OR CABLE LENGTH WITH FIXTURE VENDOR AS REQUIRED TO ACCOMMODATE THE INDICATED MOUNTING HEIGHT MEASURED TO BOTTOM OF FIXTURE.
  - LED DRIVERS FOR LOW VOLTAGE DIMMING SHALL BE 0-10 VOLTS [ DIGITAL SIGNAL DIMMING INTERFACE TYPE ] UNLESS OTHERWISE INDICATED.
  - LOW VOLTAGE DIMMING DRIVERS FOR LUMINAIRES THAT HAVE DAYLIGHT RESPONSIVE CONTROL SHALL DIM TO COMPLETELY OFF.
  - LED DRIVERS FOR LINE VOLTAGE DIMMING SHALL BE REVERSE PHASE ELECTRONIC LOW VOLTAGE (ELV) UNLESS OTHERWISE APPROVED BY THE ARCHITECT/ENGINEER.