

Attachment E- Hazard Tree List & Images

Bidders- There are 2 pages of hazards tree locations. 50 locations in total; some locations have multiple trees. There are also annotated images of each location.

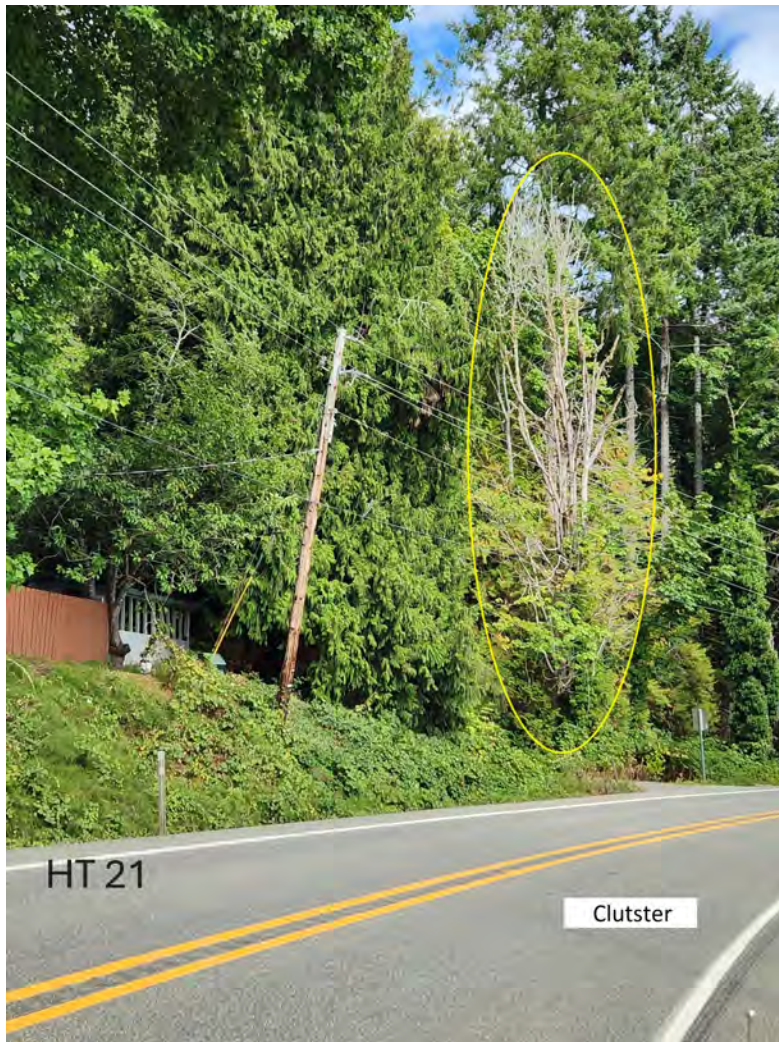
During the virtual pre-bid job show, Engineering will cover locations that are ambiguous or have multiple trees, as well as any locations where bidders have questions.

It is the bidder's responsibility to visit each location for determining removal costs. The Jefferson County trees are shaded in BLUE for convenience.

Should there be any locations that are infeasible (i.e. too high to reach the tree safely), those should be noted and sent to Jeremiah Waugh. If all bidders agree that the removal of a tree(s) at a particular location is infeasible, a change order will be produced to omit that tree(s) from the scope of work.

Tree Remove	MP	Pole Number	Map#	HWY/ST/RD	HT #	Comments	Photo Link	County	LATITUDE	LONGITUDE
REMOVE CLUSTER	321.2	N259	3764	SR101	21	CLUSTER	HT 21.jpg	Mason	47.529208	-123.050453
REMOVE 1	320.6	N269	3750	SR101	22	1 DEAD FIR	HT 22.jpg	Mason	47.536196	-123.042672
REMOVE 3	318.7	N315	20244	SR101	24	3 DEAD FIR	HT 24.jpg	Mason	47.556299	-123.027666
REMOVE LIMB	318.6	N317		SR101	25	1 SMALL LIMB OVER LINE	HT 25.jpg	Mason	47.557562	-123.026481
REMOVE 1	318.4	N321	20504	SR101	26	1 DYING FIR	HT 26.jpg	Mason	47.560002	-123.022903
REMOVE 1	316.9	N347	5992	SR101	28	1 LEANING FIR	HT 28.jpg	Mason	47.577228	-123.008383
REMOVE 2	316.8	N350	20408	SR101	29	1 LEANING ALDER, 1 DEAD FIR	HT 29.jpg	Mason	47.579356	-123.006894
REMOVE 2	315.8	N367	20425	SR101	34	MADRONE PUSHING FIR	HT 34.jpg	Mason	47.590813	-122.997532
REMOVE 1	314.8	N388	20449	SR101	38	HEALTHY FIR LEANING	HT 38.jpg	Mason	47.605052	-122.989926
REMOVE 2	314.6	N392A	20451	SR101	40	ONE DEAD ONE LEANING, HIGH REACH	HT 40.jpg	Jefferson	47.60782917	-122.9876964
REMOVE 1	308.5	N502	3989	SR101	50	1 DEAD FIR	HT 50.jpg	Jefferson	47.66677742	-122.9105361
REMOVE 3	307.1	N524	5962	SR101	51	3 DEAD ?, HIGH REACH	HT 51.jpg	Jefferson	47.68369349	-122.9000116
1 Tree Removal	307.1	N524	5962	SR101	52	remove one maple tree	HT52.jpeg	Jefferson	47.68369349	-122.9000116
9 tree Removal	307.1	N524	5962	SR101	53	9 trees to remove at the GEODUCK BAR	HT53.jpeg	Jefferson	47.68369349	-122.9000116
1 MADRONA	307.3	N521	4099	SR101	54	1 MADRONA TREE REMOVAL	HT54.jpeg	Jefferson	47.68040282	-122.8994229
3 TREE REMOVAL	308.1	N508	4015	SR101	55	3 TREE REMOVAL	HT55.jpeg	Jefferson	47.67197543	-122.9071711
1 Tree Removal	310.9	N458	3221	SR101	56	1 TREE REMOVAL	HT56.jpeg	Jefferson	47.63977547	-122.9399742
3 TREE REMOVAL	311.3	N453	3229	SR101	57	3 TREE REMOVAL	HT57.jpeg	Jefferson	47.63563468	-122.9434273
4 TREE REMOVAL	311.4	N452	3231	SR101	58	4 TREE REMOVAL + WILLOW	HT58.jpeg	Jefferson	47.63461872	-122.9439368
2 MADRONES	312	N440	3261	SR101	59	2 MADRONES REMOVAL	HT59.jpeg	Jefferson	47.62834155	-122.9527805
1 Tree Removal	312.3	N435	20493	SR101	60	1 TREE REMOVAL	HT60.jpeg	Jefferson	47.62820825	-122.957896
1 Tree Removal	312.8	N423		SR101	61	1 TREE REMOVAL	HT61.jpeg	Jefferson	47.62307484	-122.9633361
1 MADRONA	315.2	N381	3521	SR101	62	1 MADRONA TREE REMOVAL	HT62.jpeg	Mason	47.5996686	-122.9909278
1 Tree Removal	315.7	N368	20426	SR101	63	1 TREE REMOVAL	HT63.jpeg	Mason	47.59145884	-122.996727
BIG TREE REMOVAL	316.4	N358	20417	SR101	64	BIG TREE REMOVAL	HT64.jpeg	Mason	47.5854842	-123.0040663
BIG MAPLE REMOVAL	316.6	N353	20411	SR101	65	1 BIG MAPLE TREE REMOVAL	HT65.jpeg	Mason	47.58156463	-123.0062099
1 MADRONA	316..64	N352	20410	SR101	66	1 MADRONA TREE REMOVAL	HT66.jpeg	Mason	47.5807668	-123.0063176
3 MADRONA	316..65	N352	20410	SR101	67	3 MADRONA TREE REMOVAL	HT67.jpeg	Mason	47.5807668	-123.0063176
1 FIR REMOVAL	316.9	N348	3571	SR101	68	1 FIR REMOVAL	HT68.jpeg	Mason	47.57796053	-123.0078059

Tree Remove	MP	Pole Number	Map#	HWY/ST/RD	HT #	Comments	Photo Link	Mason	LATITUDE	LONGITUDE
1 MADRONA	318.2	N324	20398	SR101	69	1 MADRONA TREE REMOVAL	HT69.jpeg	Mason	47.56142334	-123.0207758
3 MADRONA	318.7	N315	20244	SR101	70	3 MADRONA TREE REMOVAL	HT-70.jpeg	Mason	47.556299	-123.027666
1 BIG FIR REMOVAL	318.75	N314	20237	SR101	71	BIG FIR REMOVAL	HT71.jpeg	Mason	47.55595949	-123.028306
1 BIG FIR REMOVAL	319.4	N302	20522	SR101	72	1 BIG ALDER REMOVAL	HT72.jpeg	Mason	47.55151571	-123.040049
1 BIG ALDER REMOVAL	319.6	N299A	3713	SR101	73	1 BIG ALDER REMOVAL	HT73.jpeg	Mason	47.55105801	-123.0432112
1 BIG FIR REMOVAL	320.3	N273	3743	SR101	74	1 BIG FIR REMOVAL	HT74.jpeg	Mason	47.54030372	-123.0407173
15 FIR REMOVAL	320.4	N272	3745	SR101	75	15 FIR REMOVAL	HT75.jpeg	Mason	47.53958717	-123.0408551
1 BIG FIR REMOVAL	320.5	N269A	3749	SR101	76	1 BIG FIR REMOVAL	HT76.jpeg	Mason	47.5372544	-123.0423836
1 FIR REMOVAL	320.6	N269	3750	SR101	77	1 BIG FIR REMOVAL	HT77.jpeg	Mason	47.536196	-123.042672
1 MAPLE REMOVAL	321	N263	4996	SR101	78	1 MAPLE REMOVAL	HT78.jpeg	Mason	47.53157884	-123.0469315
1 BIG COTTONWOOD REMOVAL	321.4	N256	3770	SR101	79	1 BIG COTTONWOOD REMOVAL	HT79.jpeg	Mason	47.52668257	-123.0506334
1 PINE TREE REMOVAL	N/A	V11	5505	W SKOKOMISH VALLEY RD	81	1 PINE TREE REMOVAL	HT81.jpg	Mason	47.31136467	-123.1858255
1 BIG ALDER REMOVAL	N/A	V98	1110	W SKOKOMISH VALLEY RD	82	1 BIG ALDER REMOVAL	HT82.jpg	Mason	47.31602895	-123.2561455
1 ALDER REMOVAL	N/A	V123	1163	W SKOKOMISH VALLEY RD	83	1 ALDER REMOVAL	HT83.jpg	Mason	47.32325671	-123.2742961
1 ALDER REMOVAL	N/A	V141	1196	W SKOKOMISH VALLEY RD	84	1 ALDER REMOVAL	HT84.jpg	Mason	47.32287487	-123.2948922
1 BIG MAPLE REMOVAL	N/A	U153R10	12	E DALBY RD	85	1 BIG MAPLE REMOVAL	HT85.jpg	Mason	47.346095	-123.081197
1 BIG FIR REMOVAL	7.3	U164	5232	SR106	86	1 BIG FIR REMOVAL	HT86.jpg	Mason	47.34801698	-123.0649864
1 BIG FIR REMOVAL	3	U63	593	SR106	87	1 BIG FIR REMOVAL	HT87.jpg	Mason	47.33093074	-123.1169413
1 BIG FIR REMOVAL	2.6	U57	5335	SR106	88	1 BIG FIR REMOVAL	HT88.jpg	Mason	47.327594	-123.120405
1 BIG FIR REMOVAL	2.5	U54	606	SR106	89	1 BIG FIR REMOVAL	HT89.jpg	Mason	47.32608029	-123.1227678
1 BIG FIR REMOVAL	2.7	U58	5881	SR106	90	1 BIG FIR REMOVAL	HT90.jpg	Mason	47.32810792	-123.1198343



HT 21
Highway: SR101
Comments: CLUSTER
Latitude: 47.529208
Longitude: -123.050453



HT 22
Highway: SR101
Comments: 1 DEAD FIR
Latitude: 47.536196
Longitude: -123.042672



HT 24
Highway: SR101
Comments: 3 DEAD FIR
Latitude: 47.556299
Longitude: -123.027666

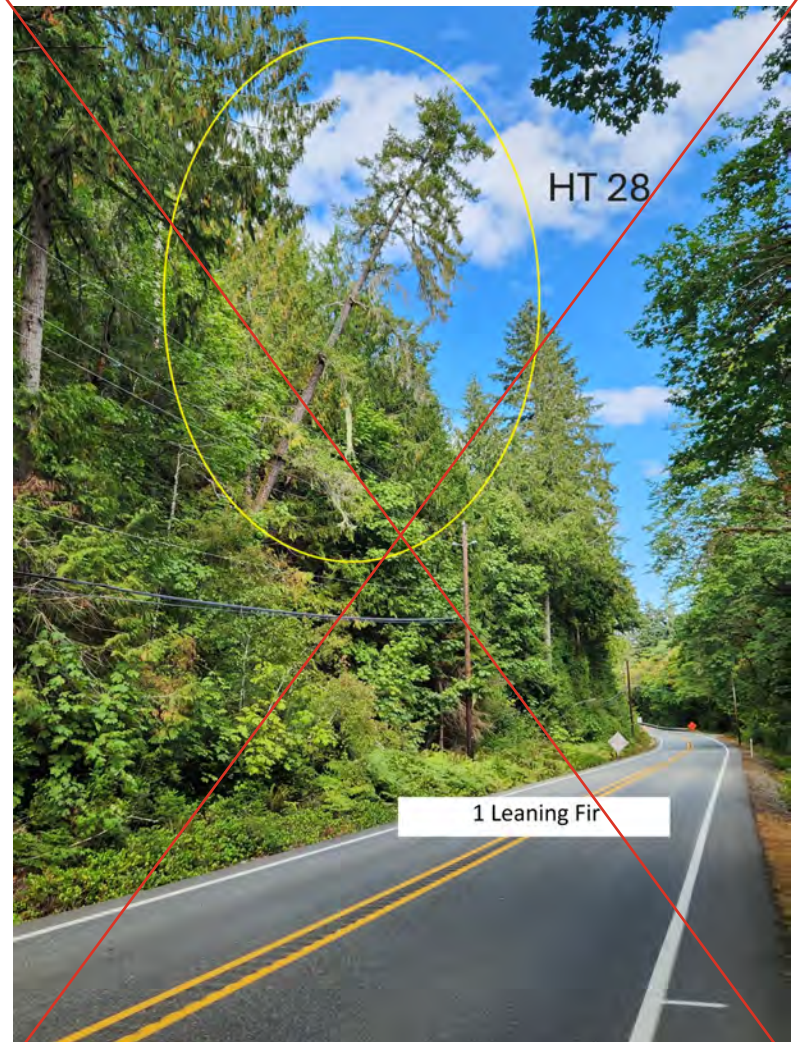
See HT 70



HT 25
Highway: SR101
Comments: 1 SMALL LIMB OVER LINE
Latitude: 47.557562
Longitude: -123.026481

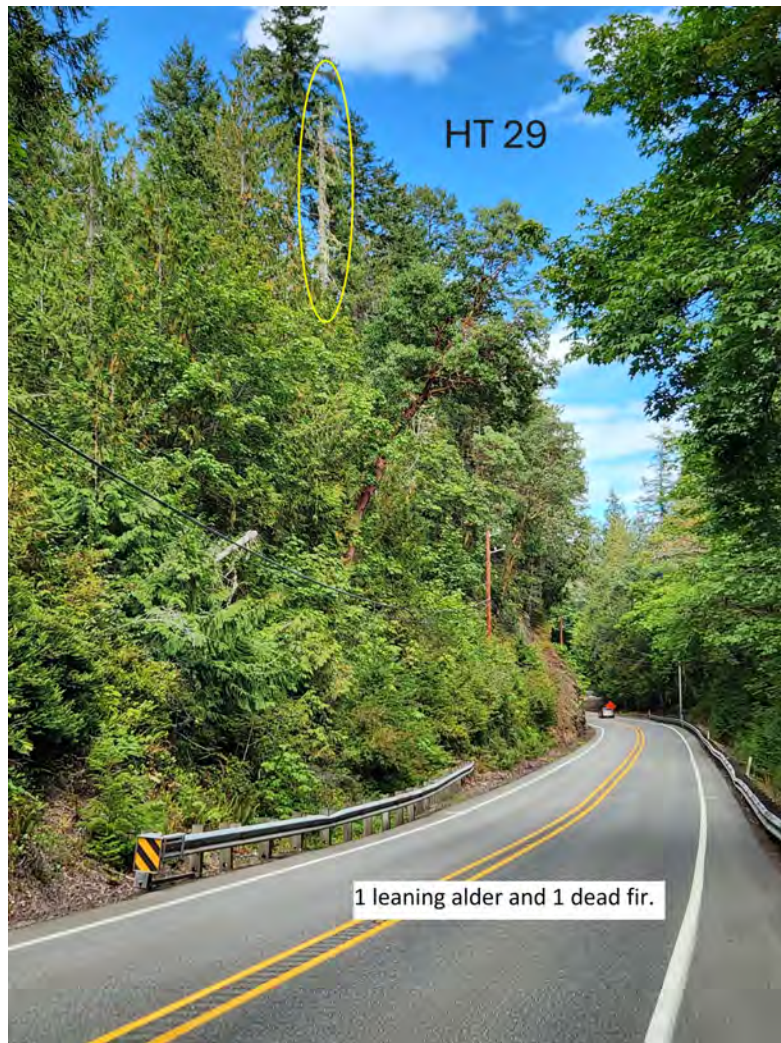


HT 26
Highway: SR101
Comments: 1 DYING FIR
Latitude: 47.560002
Longitude: -123.022903



HT 28
Highway: SR101
Comments: 1 LEANING FIR
Latitude: 47.577228
Longitude: -123.008383

See HT 68



HT 29
Highway: SR101
Comments: 1 LEANING ALDER, 1 DEAD FIR
Latitude: 47.579356
Longitude: -123.006894



HT 34
Highway: SR101
Comments: MADRONE PUSHING FIR
Latitude: 47.590813
Longitude: -122.997532



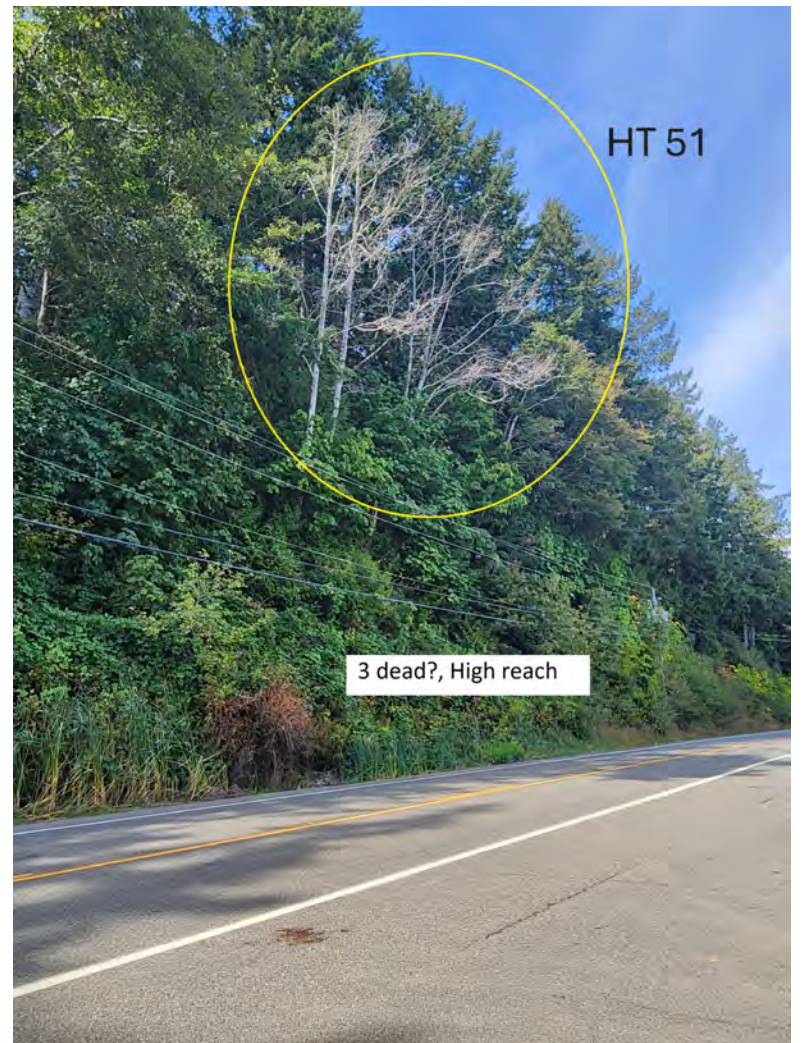
HT 38
Highway: SR101
Comments: HEALTHY FIR LEANING
Latitude: 47.605052
Longitude: -122.989926



HT 40
Highway: SR101
Comments: ONE DEAD ONE LEANING, HIGH REACH
Latitude: 47.60782917
Longitude: -122.9876964



HT 50
Highway: SR101
Comments: 1 DEAD FIR
Latitude: 47.66677742
Longitude: -122.9105361



HT 51
Highway: SR101
Comments: 3 DEAD ?, HIGH REACH
Latitude: 47.68369349
Longitude: -122.9000116



Remove one maple tree

HT 52
Highway: SR101
Comments: remove one maple tree
Latitude: 47.68369349
Longitude: -122.9000116



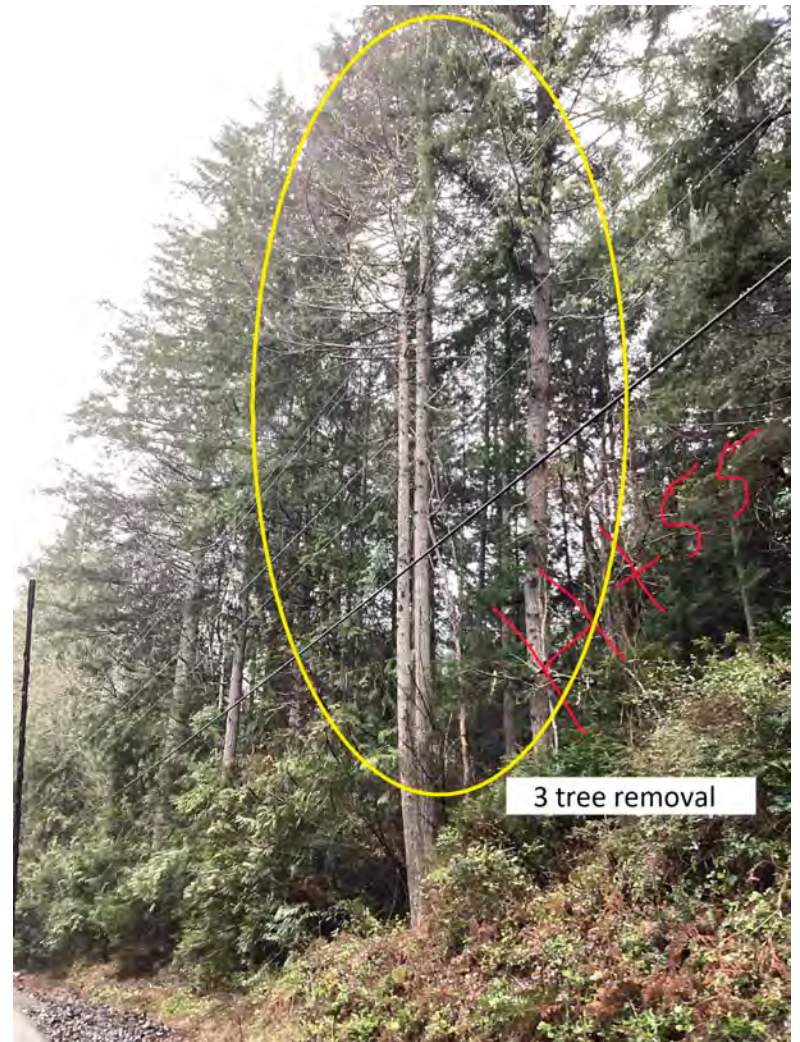
9 trees to remove at the GEODUCK BAR

HT 53
Highway: SR101
Comments: 9 trees to remove at the GEODUCK BAR
Latitude: 47.68369349
Longitude: -122.9000116



One Madrona tree removal

HT 54
Highway: SR101
Comments: 1 MADRONA TREE REMOVAL
Latitude: 47.68040282
Longitude: -122.8994229

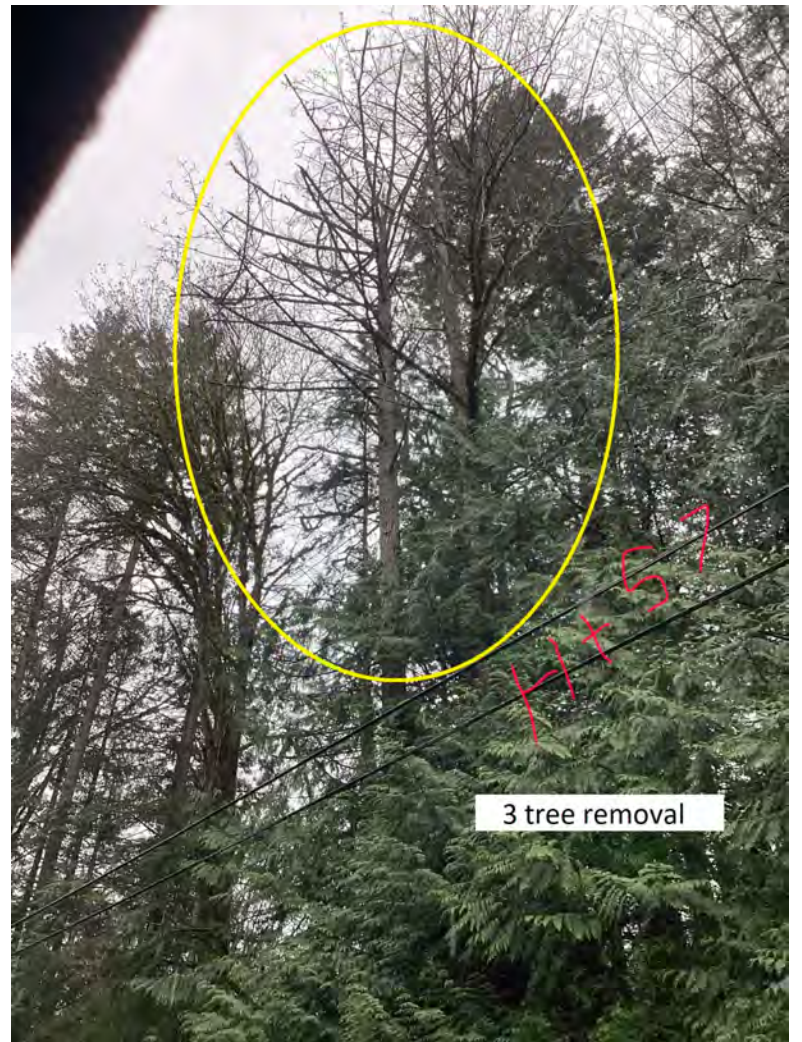


3 tree removal

HT 55
Highway: SR101
Comments: 3 TREE REMOVAL
Latitude: 47.67197543
Longitude: -122.9071711



HT 56
Highway: SR101
Comments: 1 TREE REMOVAL
Latitude: 47.63977547
Longitude: -122.9399742



HT 57
Highway: SR101
Comments: 3 TREE REMOVAL
Latitude: 47.63563468
Longitude: -122.9434273



HT 58
Highway: SR101
Comments: 4 TREE REMOVAL + WILLOW
Latitude: 47.63461872
Longitude: -122.9439368



HT 59
Highway: SR101
Comments: 2 MADRONES REMOVAL
Latitude: 47.62834155
Longitude: -122.9527805



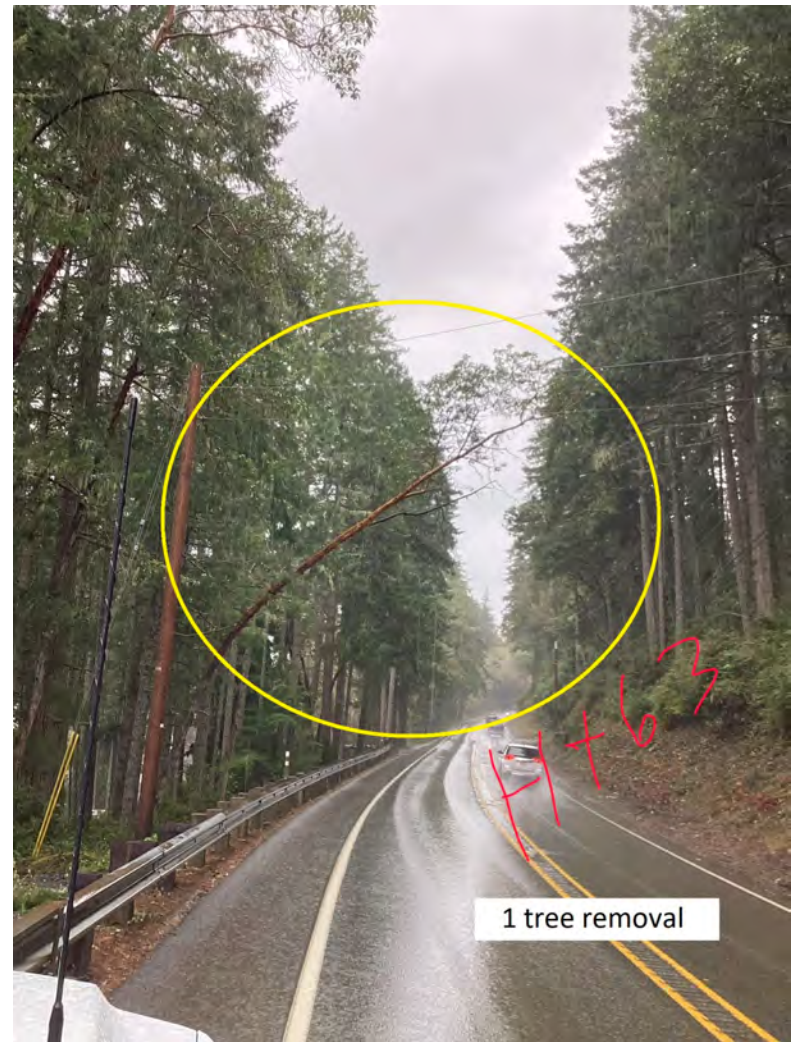
HT 60
Highway: SR101
Comments: 1 TREE REMOVAL
Latitude: 47.62820825
Longitude: -122.957896



HT 61
Highway: SR101
Comments: 1 TREE REMOVAL
Latitude: 47.62307484
Longitude: -122.9633361



HT 62
Highway: SR101
Comments: 1 MADRONA TREE REMOVAL
Latitude: 47.5996686
Longitude: -122.9909278



HT 63
Highway: SR101
Comments: 1 TREE REMOVAL
Latitude: 47.59145884
Longitude: -122.996727



HT 64
Highway: SR101
Comments: BIG TREE REMOVAL
Latitude: 47.5854842
Longitude: -123.0040663



HT 65
Highway: SR101
Comments: 1 BIG MAPLE TREE REMOVAL
Latitude: 47.58156463
Longitude: -123.0062099



HT 66
Highway: SR101
Comments: 1 MADRONA TREE REMOVAL
Latitude: 47.5807668025322
Longitude: -123.006317556002



HT 67
Highway: SR101
Comments: 3 MADRONA TREE REMOVAL
Latitude: 47.5807668025322
Longitude: -123.006317556002



HT 68
Highway: SR101
Comments: 1 FIR REMOVAL
Latitude: 47.5779605
Longitude: -123.0078059



HT 69
Highway: SR101
Comments: 1 MADRONA TREE REMOVAL
Latitude: 47.56142334
Longitude: -123.0207758



HT 70
Highway: SR101
Comments: 3 MADRONA TREE REMOVAL
Latitude: 47.556299
Longitude: -123.027666



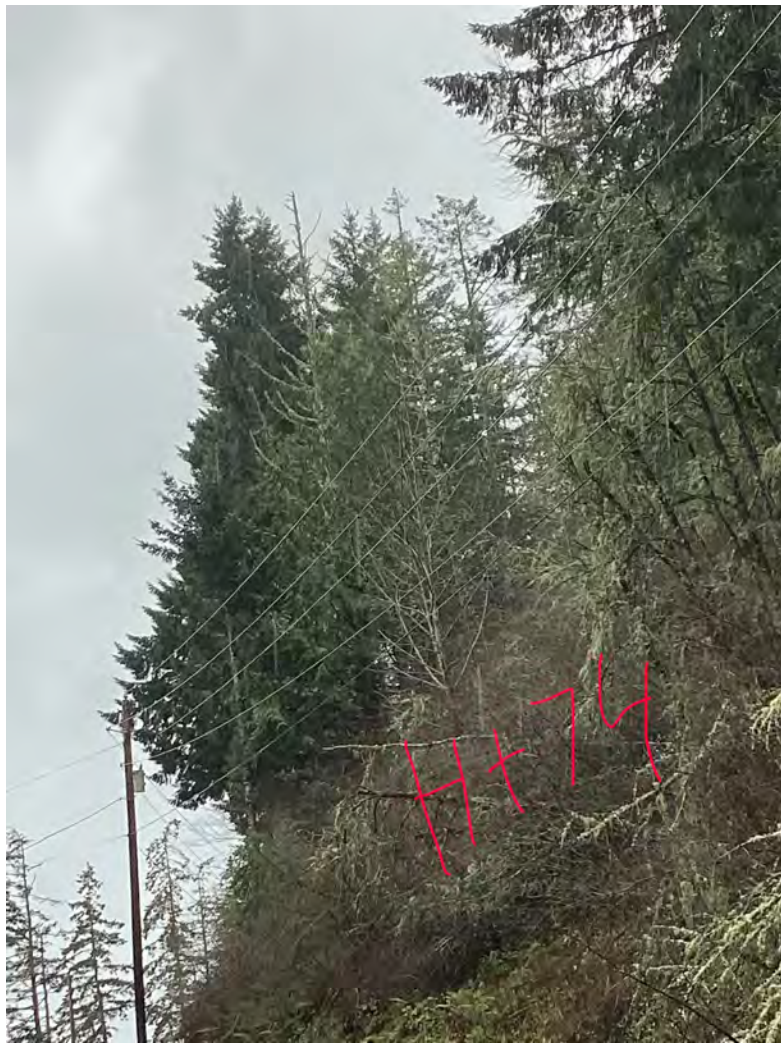
HT 71
Highway: SR101
Comments: BIG FIR REMOVAL!
Latitude: 47.555959
Longitude: -123.028306



HT 72
Highway: SR101
Comments: 1 BIG ALDER REMOVAL
Latitude: 47.551516
Longitude: -123.040049



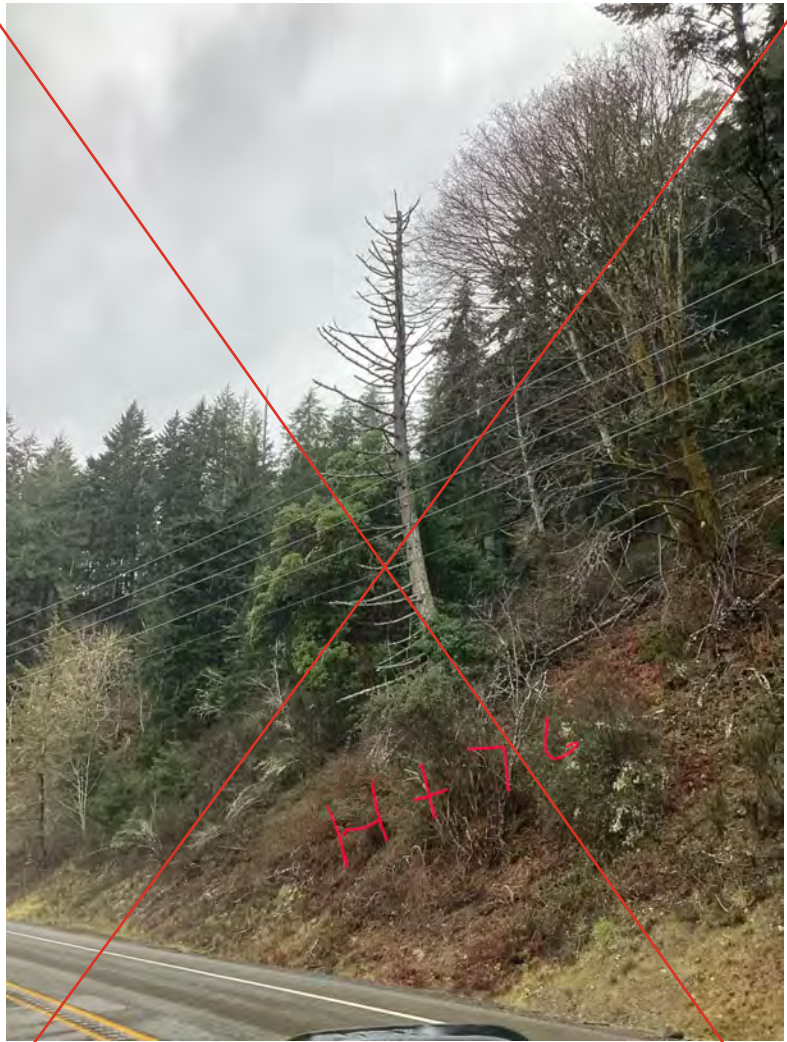
HT 73
Highway: SR101
Comments: 1 BIG ALDER REMOVAL
Latitude: 47.55105801
Longitude: -123.0432112



HT 74
Highway: SR101
Comments: 1 BIG FIR REMOVAL
Latitude: 47.54030372
Longitude: -123.0407173



HT 75
Highway: SR101
Comments: 15 FIR REMOVAL
Latitude: 47.53958717
Longitude: -123.0408551



HT 76
Highway: SR101
Comments: 1 BIG FIR REMOVAL
Latitude: 47.5372544
Longitude: -123.0423836

Duplicate of HT 22



HT 77
Highway: SR101
Comments: 1 BIG FIR REMOVAL
Latitude: 47.536196
Longitude: -123.042672



HT 78
Highway: SR101
Comments: 1 MAPLE REMOVAL
Latitude: 47.53157884
Longitude: -123.0469315



HT 79
Highway: SR101
Comments: 1 BIG COTTONWOOD REMOVAL
Latitude: 47.52668257
Longitude: -123.0506334



HT 81
Highway: W SKOKOMISH VALLEY RD
Comments: 1 PINE TREE REMOVAL
Latitude: 47.31136467
Longitude: -123.1858255



HT 82
Highway: W SKOKOMISH VALLEY RD
Comments: 1 BIG ALDER REMOVAL
Latitude: 47.31602895
Longitude: -123.2561455



HT 83
Highway: W SKOKOMISH VALLEY RD
Comments: 1 ALDER REMOVAL
Latitude: 47.32325671
Longitude: -123.2742961



HT 84
Highway: W SKOKOMISH VALLEY RD
Comments: 1 ALDER REMOVAL
Latitude: 47.32287487
Longitude: -123.2948922



HT 85
Highway: E DALBY RD
Comments: 1 BIG MAPLE REMOVAL
Latitude: 47.346095
Longitude: -123.081197



HT 86
Highway: SR106
Comments: 1 BIG FIR REMOVAL
Latitude: 47.34801698
Longitude: -123.0649864



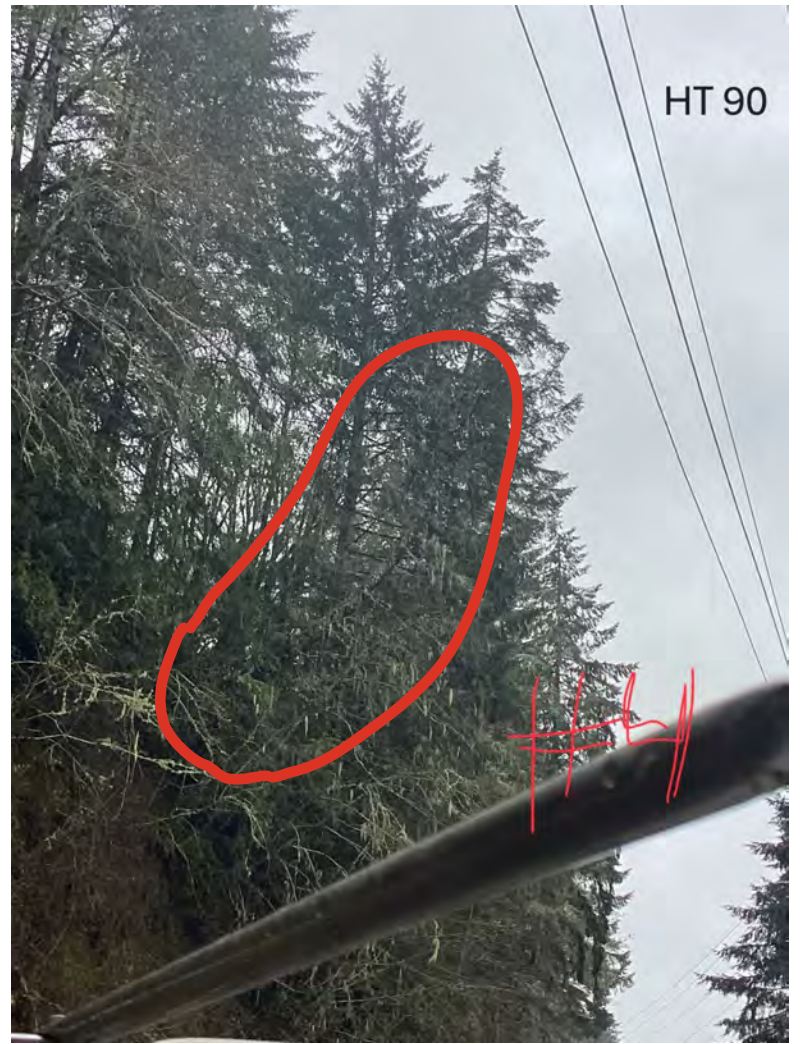
HT 87
Highway: SR106
Comments: 1 BIG FIR REMOVAL
Latitude: 47.33093074
Longitude: -123.1169413



HT 88
Highway: SR106
Comments: 2 BIG FIR REMOVAL
Latitude: 47.327594
Longitude: -123.120405



HT 89
Highway: SR106
Comments: 1 BIG FIR REMOVAL
Latitude: 47.32608029
Longitude: -123.1227678



HT 90
Highway: SR106
Comments: 1 BIG FIR REMOVAL
Latitude: 47.32810792
Longitude: -123.1198343