

## Attachment E- Hazard Tree List & Images

Bidders- There are 2 pages of hazards tree locations. 50 locations in total; some locations have multiple trees. There are also annotated images of each location.

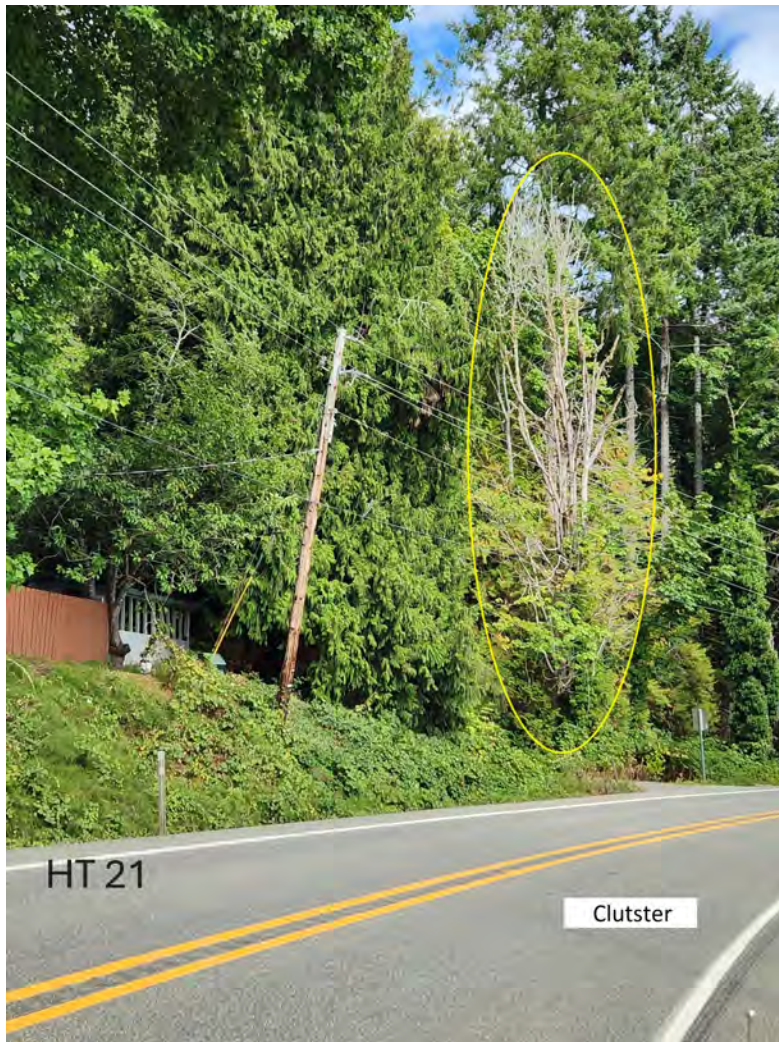
During the virtual pre-bid job show, Engineering will cover locations that are ambiguous or have multiple trees, as well as any locations where bidders have questions.

It is the bidder's responsibility to visit each location for determining removal costs. The Jefferson County trees are shaded in BLUE for convenience.

Should there be any locations that are infeasible (i.e. too high to reach the tree safely), those should be noted and sent to Jeremiah Waugh. If all bidders agree that the removal of a tree(s) at a particular location is infeasible, a change order will be produced to omit that tree(s) from the scope of work.

Tree Removal Detail	Pole Number	MP	HWY/ST/RD	HT #	Comments	Photo Link	County	LATITUDE	LONGITUDE
REMOVE CLUSTER	N259	321.2	SR101	21	CLUSTER	<a href="#">HT 21.jpg</a>	Mason	47.529208	-123.050453
REMOVE 1	N269	320.6	SR101	22	1 DEAD FIR	<a href="#">HT 22.jpg</a>	Mason	47.536196	-123.042672
REMOVE 3	N315	318.7	SR101	24	3 DEAD FIR	<a href="#">HT 24.jpg</a>	Mason	47.556299	-123.027666
REMOVE LIMB	N317	318.6	SR101	25	1 SMALL LIMB OVER LINE	<a href="#">HT 25.jpg</a>	Mason	47.557562	-123.026481
REMOVE 1	N321	318.4	SR101	26	1 DYING FIR	<a href="#">HT 26.jpg</a>	Mason	47.560002	-123.022903
REMOVE 1	N347	316.9	SR101	28	1 LEANING FIR	<a href="#">HT 28.jpg</a>	Mason	47.577228	-123.008383
REMOVE 2	N350	316.8	SR101	29	1 LEANING ALDER, 1 DEAD FIR	<a href="#">HT 29.jpg</a>	Mason	47.579356	-123.006894
REMOVE 2	N367	315.8	SR101	34	MADRONE PUSHING FIR	<a href="#">HT 34.jpg</a>	Mason	47.590813	-122.997532
REMOVE 1	N388	314.8	SR101	38	HEALTHY FIR LEANING	<a href="#">HT 38.jpg</a>	Mason	47.605052	-122.989926
REMOVE 2	N392A	314.6	SR101	40	ONE DEAD ONE LEANING, HIGH REACH	<a href="#">HT 40.jpg</a>	Jefferson	47.60782917	-122.9876964
REMOVE 1	N502	308.5	SR101	50	1 DEAD FIR	<a href="#">HT 50.jpg</a>	Jefferson	47.66677742	-122.9105361
REMOVE 3	N524	307.1	SR101	51	3 DEAD ?, HIGH REACH	<a href="#">HT 51.jpg</a>	Jefferson	47.68369349	-122.9000116
1 Tree Removal	N524	307.1	SR101	52	remove one maple tree	<a href="#">HT52.jpeg</a>	Jefferson	47.68369349	-122.9000116
9 tree Removal	N524	307.1	SR101	53	9 trees to remove at the GEODUCK BAR	<a href="#">HT53.jpeg</a>	Jefferson	47.68369349	-122.9000116
1 MADRONA	N521	307.3	SR101	54	1 MADRONA TREE REMOVAL	<a href="#">HT54.jpeg</a>	Jefferson	47.68040282	-122.8994229
3 TREE REMOVAL	N508	308.1	SR101	55	3 TREE REMOVAL	<a href="#">HT55.jpeg</a>	Jefferson	47.67197543	-122.9071711
1 Tree Removal	N458	310.9	SR101	56	1 TREE REMOVAL	<a href="#">HT56.jpeg</a>	Jefferson	47.63977547	-122.9399742
3 TREE REMOVAL	N453	311.3	SR101	57	3 TREE REMOVAL	<a href="#">HT57.jpeg</a>	Jefferson	47.63563468	-122.9434273
4 TREE REMOVAL	N452	311.4	SR101	58	4 TREE REMOVAL + WILLOW	<a href="#">HT58.jpeg</a>	Jefferson	47.63461872	-122.9439368
2 MADRONES	N440	312	SR101	59	2 MADRONES REMOVAL	<a href="#">HT59.jpeg</a>	Jefferson	47.62834155	-122.9527805
1 Tree Removal	N435	312.3	SR101	60	1 TREE REMOVAL	<a href="#">HT60.jpeg</a>	Jefferson	47.62820825	-122.957896
1 Tree Removal	N423	312.8	SR101	61	1 TREE REMOVAL	<a href="#">HT61.jpeg</a>	Jefferson	47.62307484	-122.9633361
1 MADRONA	N381	315.2	SR101	62	1 MADRONA TREE REMOVAL	<a href="#">HT62.jpeg</a>	Mason	47.5996686	-122.9909278
1 Tree Removal	N368	315.7	SR101	63	1 TREE REMOVAL	<a href="#">HT63.jpeg</a>	Mason	47.59145884	-122.996727
BIG TREE REMOVAL	N358	316.4	SR101	64	BIG TREE REMOVAL	<a href="#">HT64.jpeg</a>	Mason	47.5854842	-123.0040663
BIG MAPLE REMOVAL	N353	316.6	SR101	65	1 BIG MAPLE TREE REMOVAL	<a href="#">HT65.jpeg</a>	Mason	47.58156463	-123.0062099
1 MADRONA	N353	316.6	SR101	66	1 MADRONA TREE REMOVAL	<a href="#">HT66.jpeg</a>	Mason	47.58156463	-123.0062099
3 MADRONA	N353	316.6	SR101	67	3 MADRONA TREE REMOVAL	<a href="#">HT67.jpeg</a>	Mason	47.58156463	-123.0062099
1 FIR REMOVAL	N592	303.2	SR101	68	1 FIR REMOVAL	<a href="#">HT68.jpeg</a>	Jefferson	47.7376264	-122.8808662
1 MADRONA	N324	318.2	SR101	69	1 MADRONA TREE REMOVAL	<a href="#">HT69.jpeg</a>	Mason	47.56142334	-123.0207758
3 MADRONA	N315	318.7	SR101	70	3 MADRONA TREE REMOVAL	<a href="#">HT-70.jpeg</a>	Mason	47.556299	-123.027666
1 BIG FIR REMOVAL	N315	318.7	SR101	71	BIG FIR REMOVAL	<a href="#">HT71.jpeg</a>	Mason	47.556299	-123.027666
1 BIG FIR REMOVAL	N304	319.4	SR101	72	1 BIG ALDER REMOVAL	<a href="#">HT72.jpeg</a>	Mason	47.55176428	-123.0375949
1 BIG ALDER REMOVAL	N299A	319.6	SR101	73	1 BIG ALDER REMOVAL	<a href="#">HT73.jpeg</a>	Mason	47.55105801	-123.0432112
1 BIG FIR REMOVAL	N273	320.3	SR101	74	1 BIG FIR REMOVAL	<a href="#">HT74.jpeg</a>	Mason	47.54030372	-123.0407173
15 FIR REMOVAL	N272	320.4	SR101	75	15 FIR REMOVAL	<a href="#">HT75.jpeg</a>	Mason	47.53958717	-123.0408551
1 BIG FIR REMOVAL	N269A	320.5	SR101	76	1 BIG FIR REMOVAL	<a href="#">HT76.jpeg</a>	Mason	47.5372544	-123.0423836
1 FIR REMOVAL	N269	320.6	SR101	77	1 BIG FIR REMOVAL	<a href="#">HT77.jpeg</a>	Mason	47.536196	-123.042672
1 MAPLE REMOVAL	N263	321	SR101	78	1 MAPLE REMOVAL	<a href="#">HT78.jpeg</a>	Mason	47.53157884	-123.0469315
1 BIG COTTONWOOD REMOVAL	N256	321.4	SR101	79	1 BIG COTTONWOOD REMOVAL	<a href="#">HT79.jpeg</a>	Mason	47.52668257	-123.0506334
1 PINE TREE REMOVAL	V11	N/A	W SKOKOMISH VALLEY RD	81	1 PINE TREE REMOVAL	<a href="#">HT81.jpg</a>	Mason	47.31136467	-123.1858255
1 BIG ALDER REMOVAL	V98	N/A	W SKOKOMISH VALLEY RD	82	1 BIG ALDER REMOVAL	<a href="#">HT82.jpg</a>	Mason	47.31602895	-123.2561455
1 ALDER REMOVAL	V123	N/A	W SKOKOMISH VALLEY RD	83	1 ALDER REMOVAL	<a href="#">HT83.jpg</a>	Mason	47.32325671	-123.2742961
1 ALDER REMOVAL	V141	N/A	W SKOKOMISH VALLEY RD	84	1 ALDER REMOVAL	<a href="#">HT84.jpg</a>	Mason	47.32287487	-123.2948922
1 BIG MAPLE REMOVAL	U153R9	N/A	E DALBY RD	85	1 BIG MAPLE REMOVAL	<a href="#">HT85.jpg</a>	Mason		

1 BIG FIR REMOVAL	U164	7.3	SR106	86	1 BIG FIR REMOVAL	<a href="#">HT86.jpg</a>	Mason	47.34801698	-123.0649864
1 BIG FIR REMOVAL	U63	3	SR106	87	1 BIG FIR REMOVAL	<a href="#">HT87.jpg</a>	Mason	47.33093074	-123.1169413
1 BIG FIR REMOVAL	U57	2.6	SR106	88	1 BIG FIR REMOVAL	<a href="#">HT88.jpg</a>	Mason	47.32699611	-123.1213435
1 BIG FIR REMOVAL	U54	2.5	SR106	89	1 BIG FIR REMOVAL	<a href="#">HT89.jpg</a>	Mason	47.32608029	-123.1227678
1 BIG FIR REMOVAL	U58	2.7	SR106	90	1 BIG FIR REMOVAL	<a href="#">HT90.jpg</a>	Mason	47.32810792	-123.1198343
<b>Tree Remove</b>	<b>Pole Number</b>	<b>MP</b>	<b>HWY/ST/RD</b>	<b>HT #</b>	<b>Comments</b>	<b>Photo Link</b>		<b>LATITUDE</b>	<b>LONGITUDE</b>



**HT 21**  
**Highway:** SR101  
**Comments:** CLUSTER  
**Latitude:** 47.529208  
**Longitude:** -123.050453



**HT 22**  
**Highway:** SR101  
**Comments:** 1 DEAD FIR  
**Latitude:** 47.536196  
**Longitude:** -123.042672



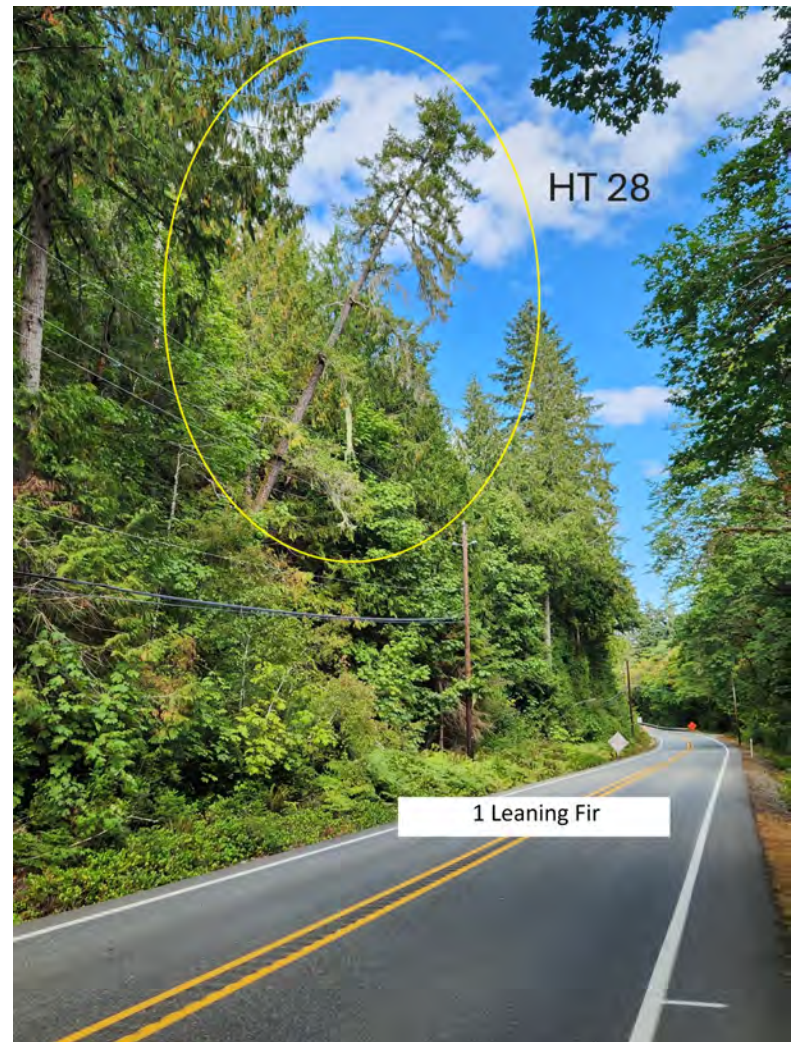
**HT 24**  
**Highway:** SR101  
**Comments:** 3 DEAD FIR  
**Latitude:** 47.556299  
**Longitude:** -123.027666



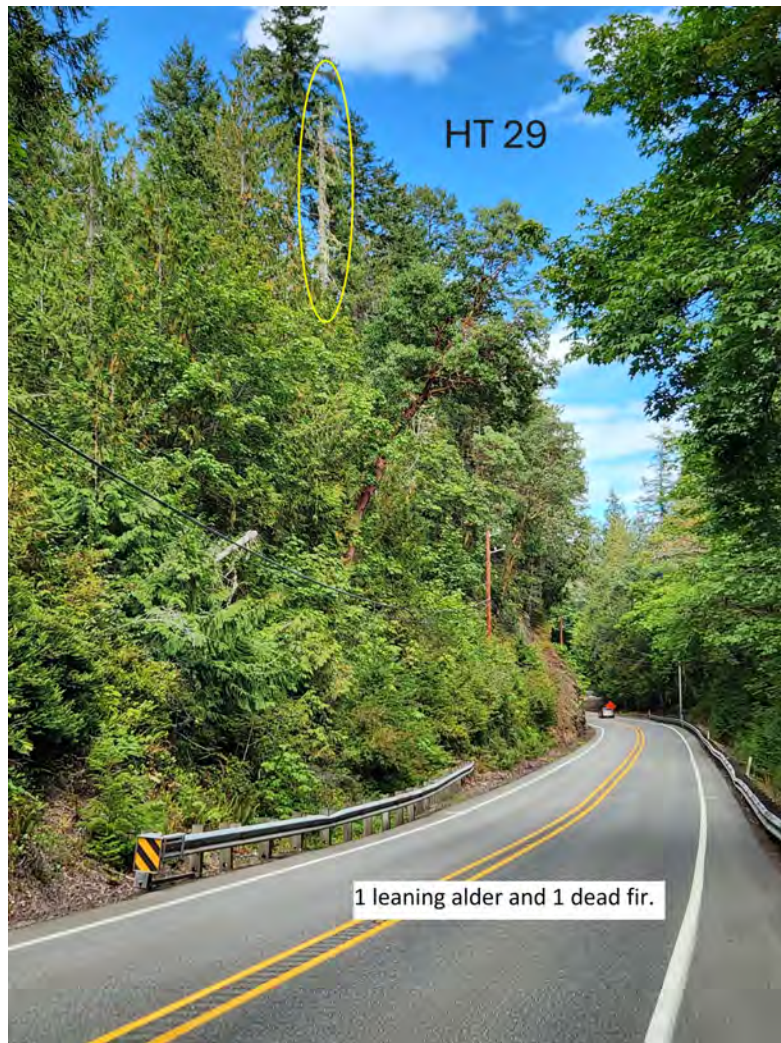
**HT 25**  
**Highway:** SR101  
**Comments:** 1 SMALL LIMB OVER LINE  
**Latitude:** 47.557562  
**Longitude:** -123.026481



**HT 26**  
**Highway:** SR101  
**Comments:** 1 DYING FIR  
**Latitude:** 47.560002  
**Longitude:** -123.022903



**HT 28**  
**Highway:** SR101  
**Comments:** 1 LEANING FIR  
**Latitude:** 47.577228  
**Longitude:** -123.008383



**HT 29**  
**Highway:** SR101  
**Comments:** 1 LEANING ALDER, 1 DEAD FIR  
**Latitude:** 47.579356  
**Longitude:** -123.006894



**HT 34**  
**Highway:** SR101  
**Comments:** MADRONE PUSHING FIR  
**Latitude:** 47.590813  
**Longitude:** -122.997532



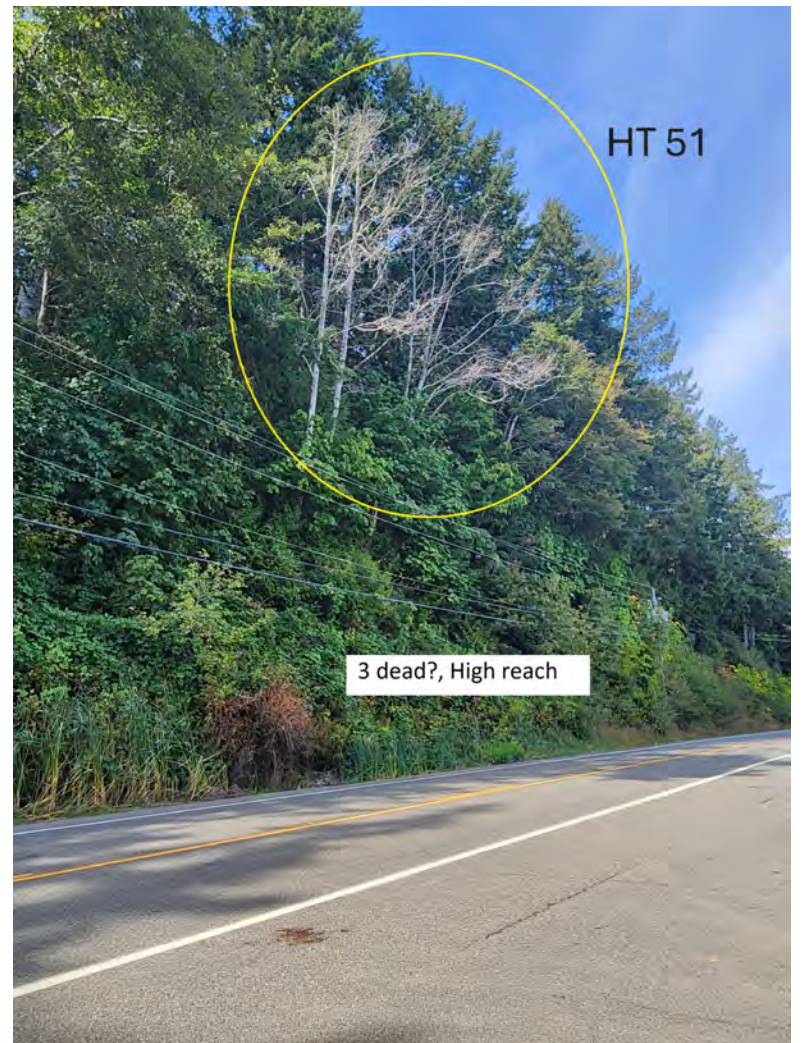
**HT 38**  
**Highway:** SR101  
**Comments:** HEALTHY FIR LEANING  
**Latitude:** 47.605052  
**Longitude:** -122.989926



**HT 40**  
**Highway:** SR101  
**Comments:** ONE DEAD ONE LEANING, HIGH REACH  
**Latitude:** 47.60782917  
**Longitude:** -122.9876964



**HT 50**  
**Highway:** SR101  
**Comments:** 1 DEAD FIR  
**Latitude:** 47.66677742  
**Longitude:** -122.9105361



**HT 51**  
**Highway:** SR101  
**Comments:** 3 DEAD ?, HIGH REACH  
**Latitude:** 47.68369349  
**Longitude:** -122.9000116



**HT 52**  
**Highway:** SR101  
**Comments:** remove one maple tree  
**Latitude:** 47.68369349  
**Longitude:** -122.9000116

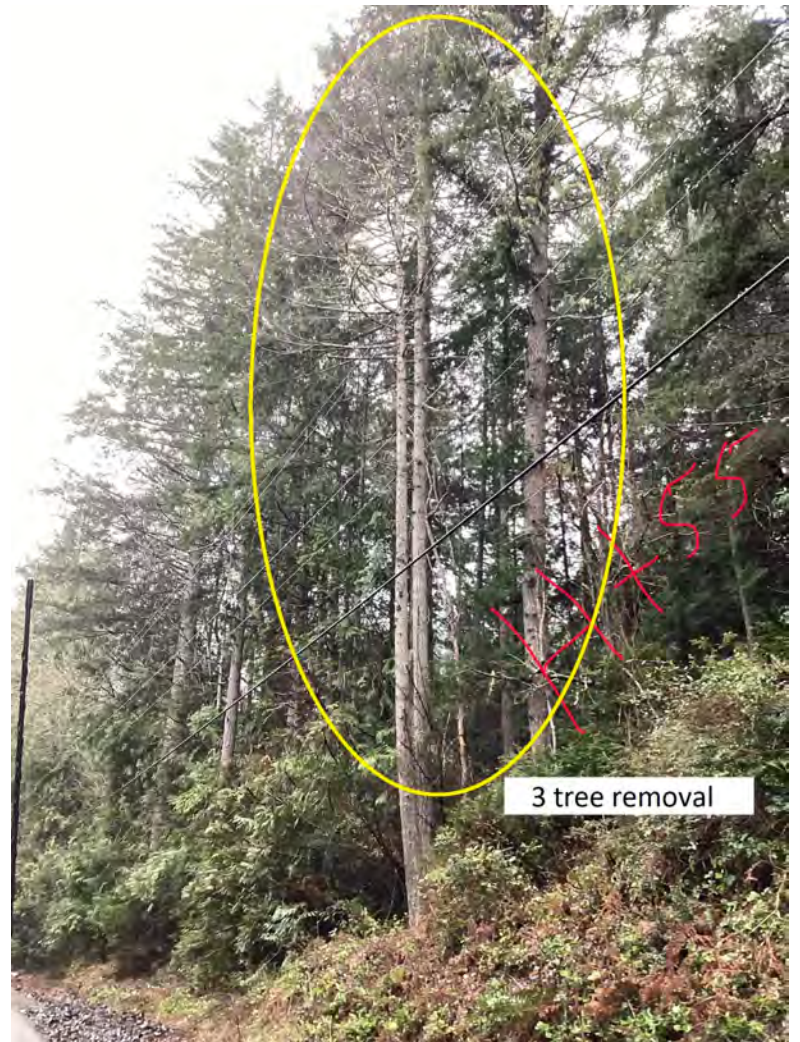


**HT 53**  
**Highway:** SR101  
**Comments:** 9 trees to remove at the GEODUCK BAR  
**Latitude:** 47.68369349  
**Longitude:** -122.9000116



One Madrona tree removal

**HT 54**  
**Highway:** SR101  
**Comments:** 1 MADRONA TREE REMOVAL  
**Latitude:** 47.68040282  
**Longitude:** -122.8994229

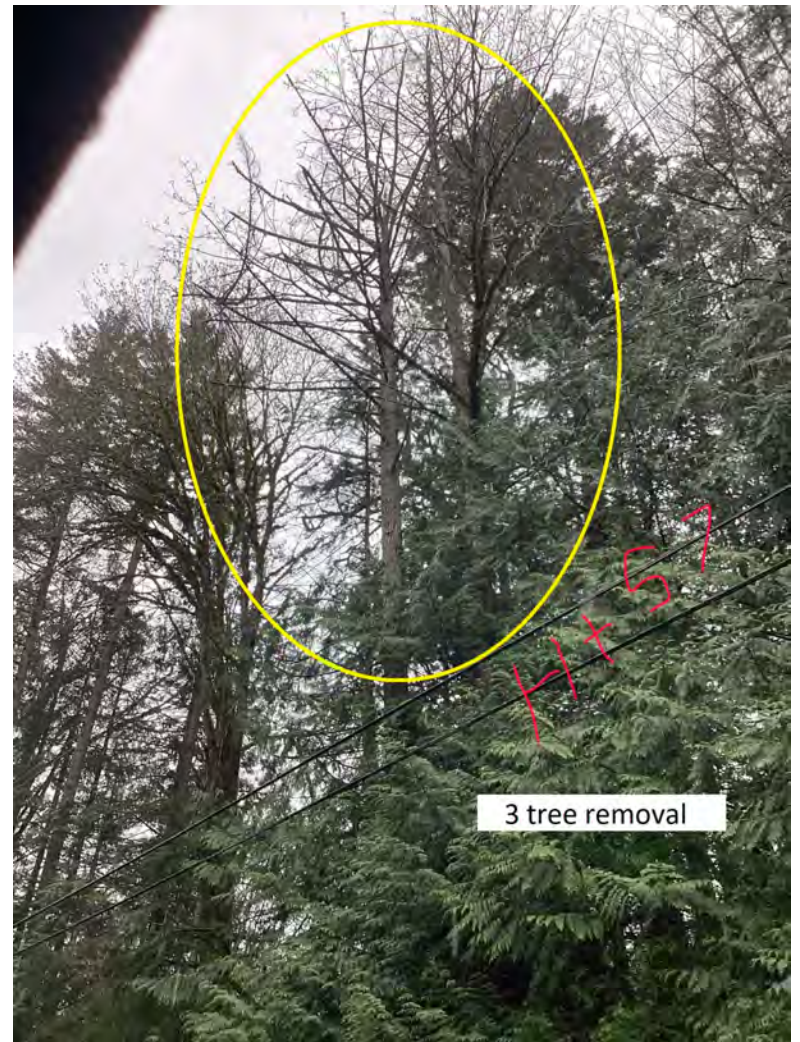


3 tree removal

**HT 55**  
**Highway:** SR101  
**Comments:** 3 TREE REMOVAL  
**Latitude:** 47.67197543  
**Longitude:** -122.9071711



**HT 56**  
**Highway:** SR101  
**Comments:** 1 TREE REMOVAL  
**Latitude:** 47.63977547  
**Longitude:** -122.9399742



**HT 57**  
**Highway:** SR101  
**Comments:** 3 TREE REMOVAL  
**Latitude:** 47.63563468  
**Longitude:** -122.9434273



**HT 58**  
**Highway:** SR101  
**Comments:** 4 TREE REMOVAL + WILLOW  
**Latitude:** 47.63461872  
**Longitude:** -122.9439368



**HT 59**  
**Highway:** SR101  
**Comments:** 2 MADRONES REMOVAL  
**Latitude:** 47.62834155  
**Longitude:** -122.9527805



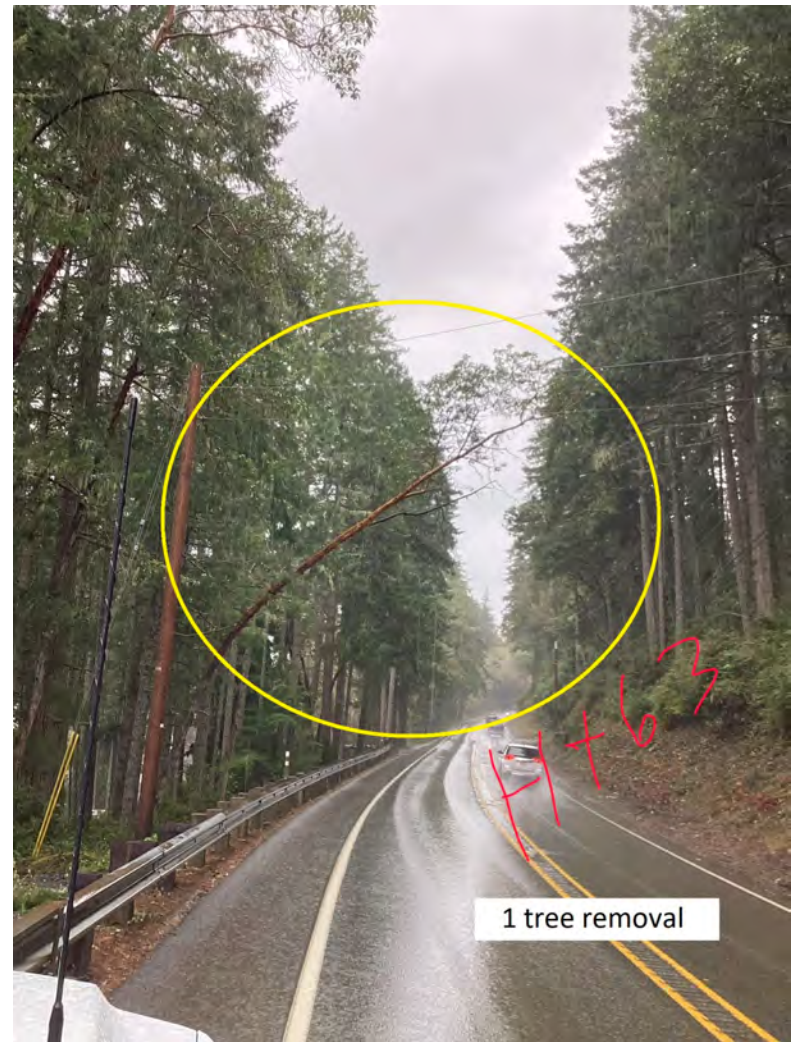
**HT 60**  
**Highway:** SR101  
**Comments:** 1 TREE REMOVAL  
**Latitude:** 47.62820825  
**Longitude:** -122.957896



**HT 61**  
**Highway:** SR101  
**Comments:** 1 TREE REMOVAL  
**Latitude:** 47.62307484  
**Longitude:** -122.9633361



**HT 62**  
**Highway:** SR101  
**Comments:** 1 MADRONA TREE REMOVAL  
**Latitude:** 47.5996686  
**Longitude:** -122.9909278



**HT 63**  
**Highway:** SR101  
**Comments:** 1 TREE REMOVAL  
**Latitude:** 47.59145884  
**Longitude:** -122.996727



**HT 64**  
**Highway:** SR101  
**Comments:** BIG TREE REMOVAL  
**Latitude:** 47.5854842  
**Longitude:** -123.0040663



**HT 65**  
**Highway:** SR101  
**Comments:** 1 BIG MAPLE TREE REMOVAL  
**Latitude:** 47.58156463  
**Longitude:** -123.0062099



**HT 66**  
**Highway:** SR101  
**Comments:** 1 MADRONA TREE REMOVAL  
**Latitude:** 47.58156463  
**Longitude:** -123.0062099



**HT 67**  
**Highway:** SR101  
**Comments:** 3 MADRONA TREE REMOVAL  
**Latitude:** 47.58156463  
**Longitude:** -123.0062099



**HT 68**  
**Highway:** SR101  
**Comments:** 1 FIR REMOVAL  
**Latitude:** 47.7376264  
**Longitude:** -122.8808662



**HT 69**  
**Highway:** SR101  
**Comments:** 1 MADRONA TREE REMOVAL  
**Latitude:** 47.56142334  
**Longitude:** -123.0207758



**HT 70**  
**Highway:** SR101  
**Comments:** 3 MADRONA TREE REMOVAL  
**Latitude:** 47.556299  
**Longitude:** -123.027666



**HT 71**  
**Highway:** SR101  
**Comments:** BIG FIR REMOVAL  
**Latitude:** 47.556299  
**Longitude:** -123.027666



**HT 72**  
**Highway:** SR101  
**Comments:** 1 BIG ALDER REMOVAL  
**Latitude:** 47.55176428  
**Longitude:** -123.0375949



**HT 73**  
**Highway:** SR101  
**Comments:** 1 BIG ALDER REMOVAL  
**Latitude:** 47.55105801  
**Longitude:** -123.0432112



**HT 74**  
**Highway:** SR101  
**Comments:** 1 BIG FIR REMOVAL  
**Latitude:** 47.54030372  
**Longitude:** -123.0407173



**HT 75**  
**Highway:** SR101  
**Comments:** 15 FIR REMOVAL  
**Latitude:** 47.53958717  
**Longitude:** -123.0408551



**HT 76**  
**Highway:** SR101  
**Comments:** 1 BIG FIR REMOVAL  
**Latitude:** 47.5372544  
**Longitude:** -123.0423836



**HT 77**  
**Highway:** SR101  
**Comments:** 1 BIG FIR REMOVAL  
**Latitude:** 47.536196  
**Longitude:** -123.042672



**HT 78**  
**Highway:** SR101  
**Comments:** 1 MAPLE REMOVAL  
**Latitude:** 47.53157884  
**Longitude:** -123.0469315



**HT 79**  
**Highway:** SR101  
**Comments:** 1 BIG COTTONWOOD REMOVAL  
**Latitude:** 47.52668257  
**Longitude:** -123.0506334



**HT 81**  
**Highway:** W SKOKOMISH VALLEY RD  
**Comments:** 1 PINE TREE REMOVAL  
**Latitude:** 47.31136467  
**Longitude:** -123.1858255



**HT 82**  
**Highway:** W SKOKOMISH VALLEY RD  
**Comments:** 1 BIG ALDER REMOVAL  
**Latitude:** 47.31602895  
**Longitude:** -123.2561455



**HT 83**  
**Highway:** W SKOKOMISH VALLEY RD  
**Comments:** 1 ALDER REMOVAL  
**Latitude:** 47.32325671  
**Longitude:** -123.2742961



**HT 84**  
**Highway:** W SKOKOMISH VALLEY RD  
**Comments:** 1 ALDER REMOVAL  
**Latitude:** 47.32287487  
**Longitude:** -123.2948922



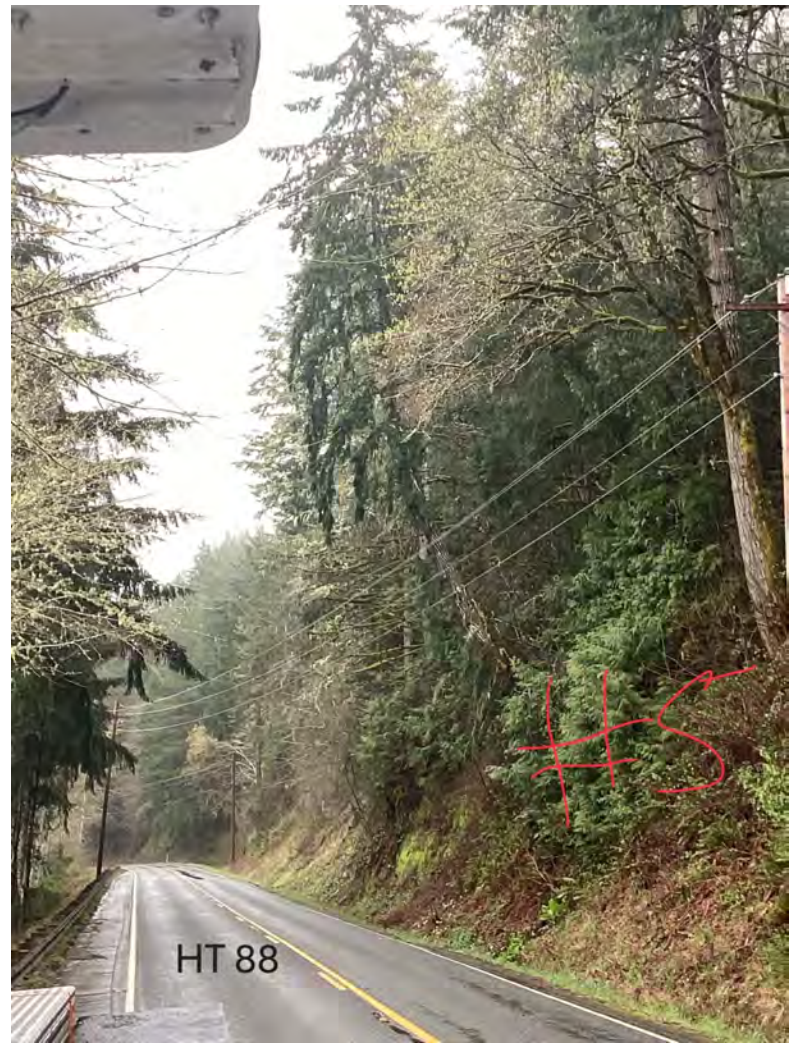
**HT 85**  
**Highway:** E DALBY RD  
**Comments:** 1 BIG MAPLE REMOVAL  
**Latitude:** N/A  
**Longitude:** N/A



**HT 86**  
**Highway:** SR106  
**Comments:** 1 BIG FIR REMOVAL  
**Latitude:** 47.34801698  
**Longitude:** -123.0649864



**HT 87**  
**Highway:** SR106  
**Comments:** 1 BIG FIR REMOVAL  
**Latitude:** 47.33093074  
**Longitude:** -123.1169413



**HT 88**  
**Highway:** SR106  
**Comments:** 1 BIG FIR REMOVAL  
**Latitude:** 47.32699611  
**Longitude:** -123.1213435



**HT 89**  
**Highway:** SR106  
**Comments:** 1 BIG FIR REMOVAL  
**Latitude:** 47.32608029  
**Longitude:** -123.1227678



**HT 90**  
**Highway:** SR106  
**Comments:** 1 BIG FIR REMOVAL  
**Latitude:** 47.32810792  
**Longitude:** -123.1198343