



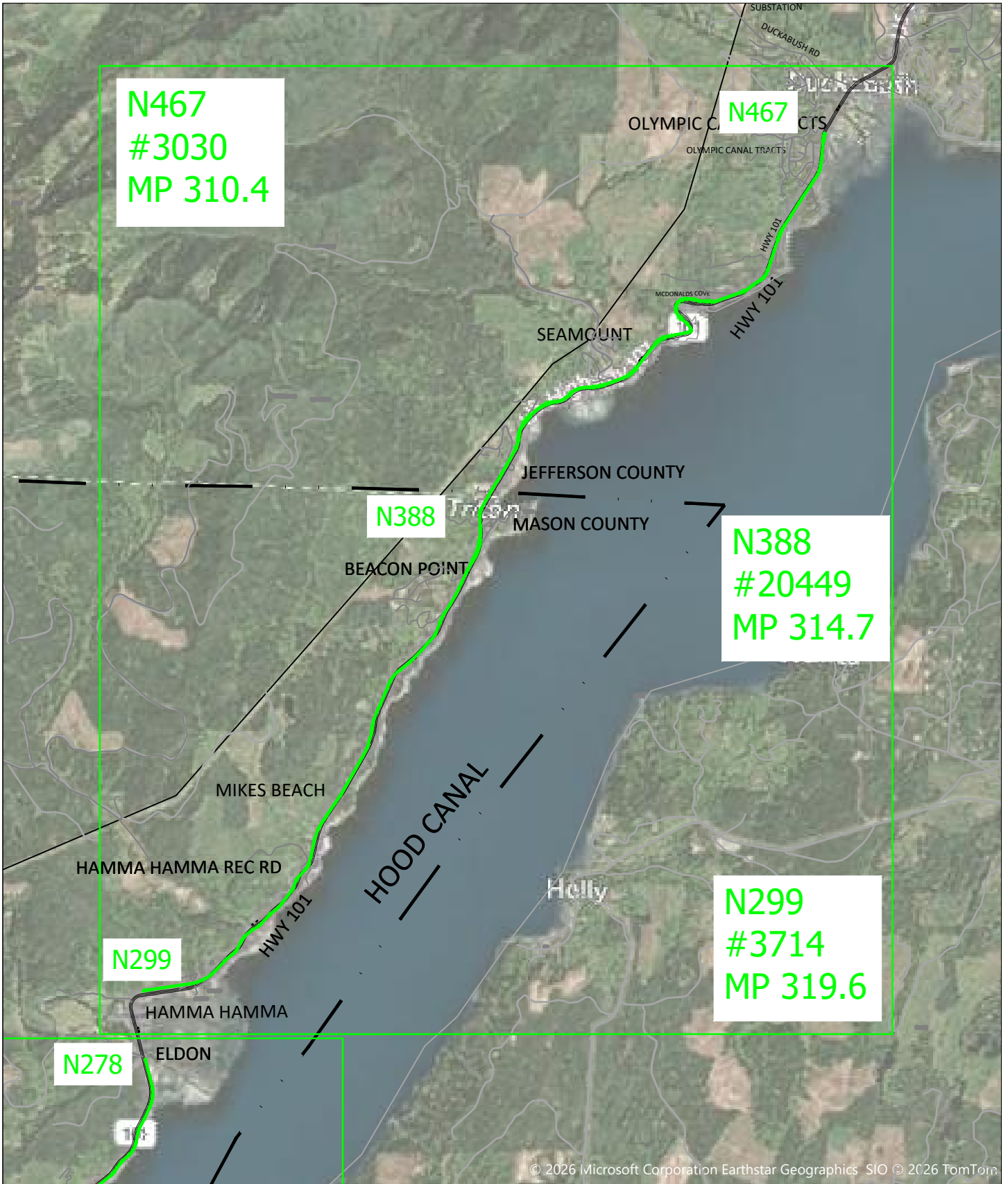
Mason PUD 1

2026 Vegetation Management Project

SCOPE OF WORK- See Attachments A-D for maps of highway locations listed below:

Live-line 3-Phase (12.47/7.2kV) tree trimming in the PUD 1 service territory along US Highway 101 & Highway 106, as follows:

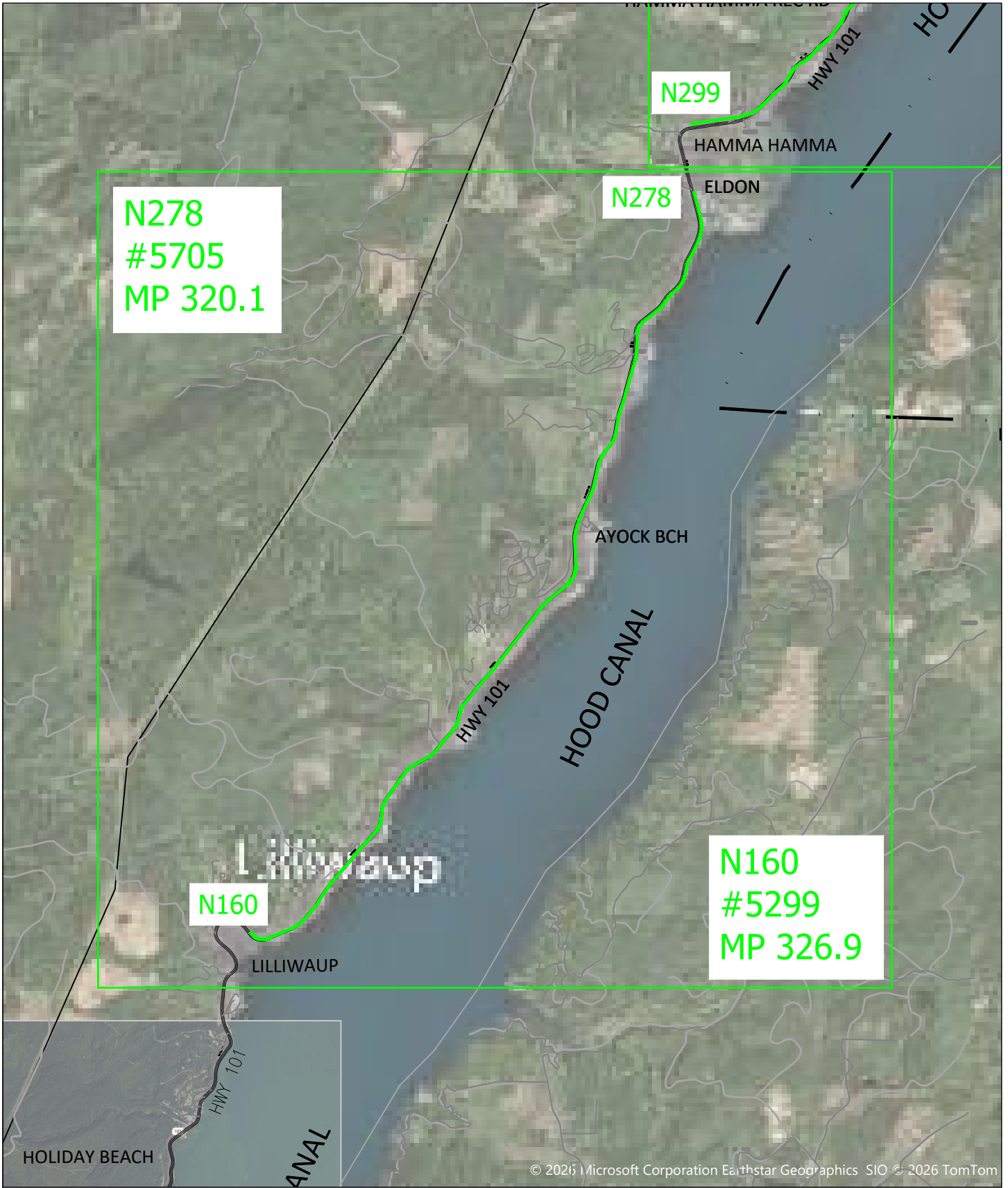
- Mile Post 310.4 to MP 319.6- Starting north of the intersection of Hwy 101 and Canal View St. at Pole #3030, south to Pole #3714, at the intersection of Hwy 101 and Lon Webb Rd.
- Mile Post 320.1 to MP 326.9 - Starting at the intersection of Hwy 101 and N. Eldon Ln. at Pole #5705, south to Pole #5299 near the entrance to Lilliwaup Tidelands State Park along Hwy 101.
- Mile Post 331.4 to MP 332.8 - Starting at Pole #20227 within Mason PUD#1 ROW, south along the PUD ROW to Pole #20033 0.15 miles south of Hoodspout Winery along Hwy 101.
- Mile Post 2.4 to Mile Post 6.8- Starting at the intersection of Hwy 106 and E. Webb Hill Rd. at Pole #5326, north to Pole #5233 at the intersection of Hwy 106 and E. Dalby Rd.
- Hazard Tree Removals at 50 Locations- 14 in Jefferson County and 36 in Mason County. Several trees in some locations. [See Attachment E for list and annotated pictures.](#)



TREE TRIMMING 2026 ATTACHMENT A

PUBLIC UTILITY DISTRICT NO.1 of MASON COUNTY
21971 N. HWY 101 (Potlatch) SHELTON, WA 98584

SHEET: #	OF #	REV NO
1	OF 4	0



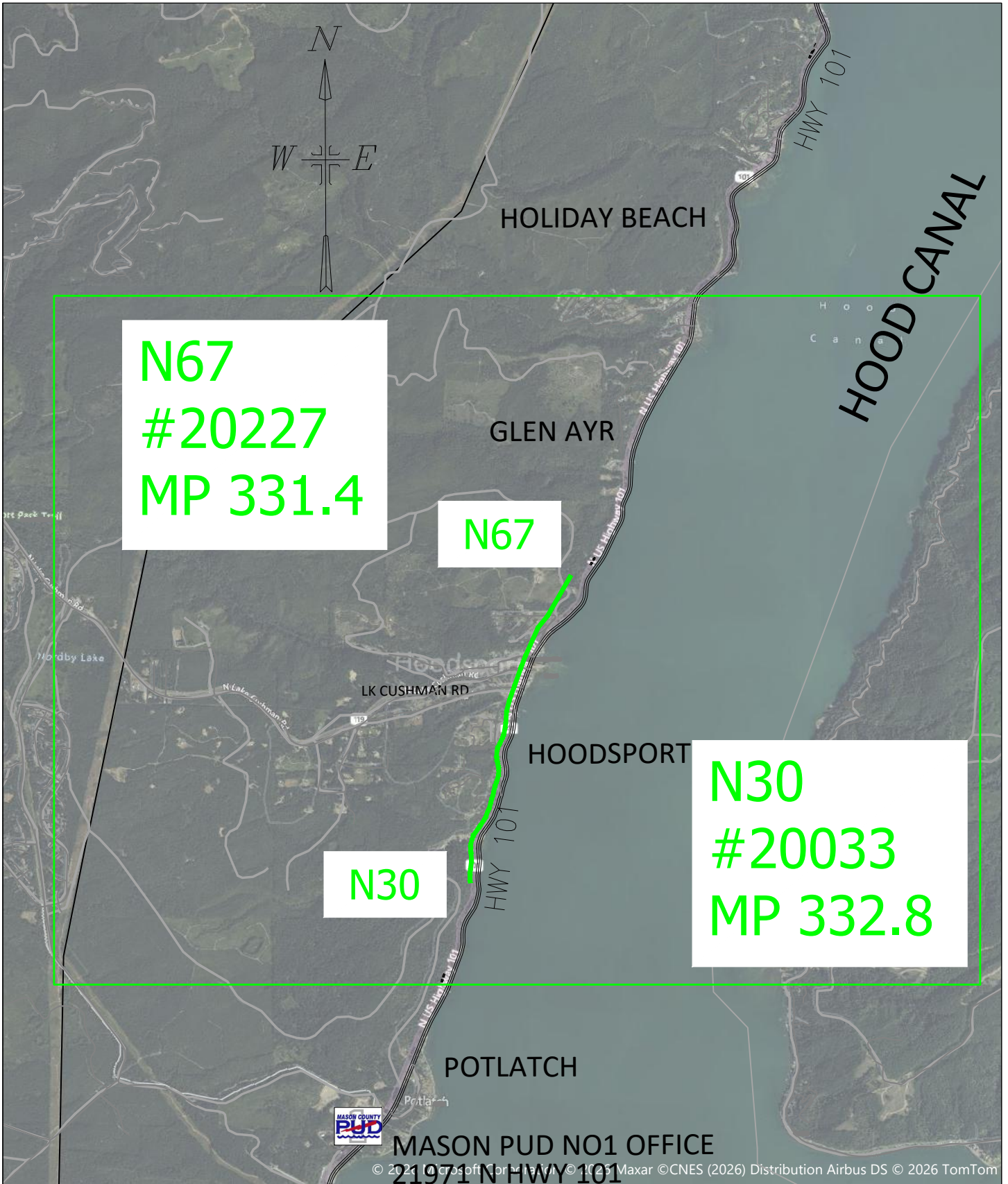
© 2025 Microsoft Corporation Earthstar Geographics SIO © 2026 TomTom



TREE TRIMMING 2026 ATTACHMENT B

PUBLIC UTILITY DISTRICT NO.1 of MASON COUNTY
21971 N. HWY 101 (Potlatch) SHELTON, WA 98584

SHEET: #	OF #	REV NO
2	OF 4	0



N67
#20227
MP 331.4

N67

N30
#20033
MP 332.8

N30



MASON PUD NO1 OFFICE
 21971 N HWY 101

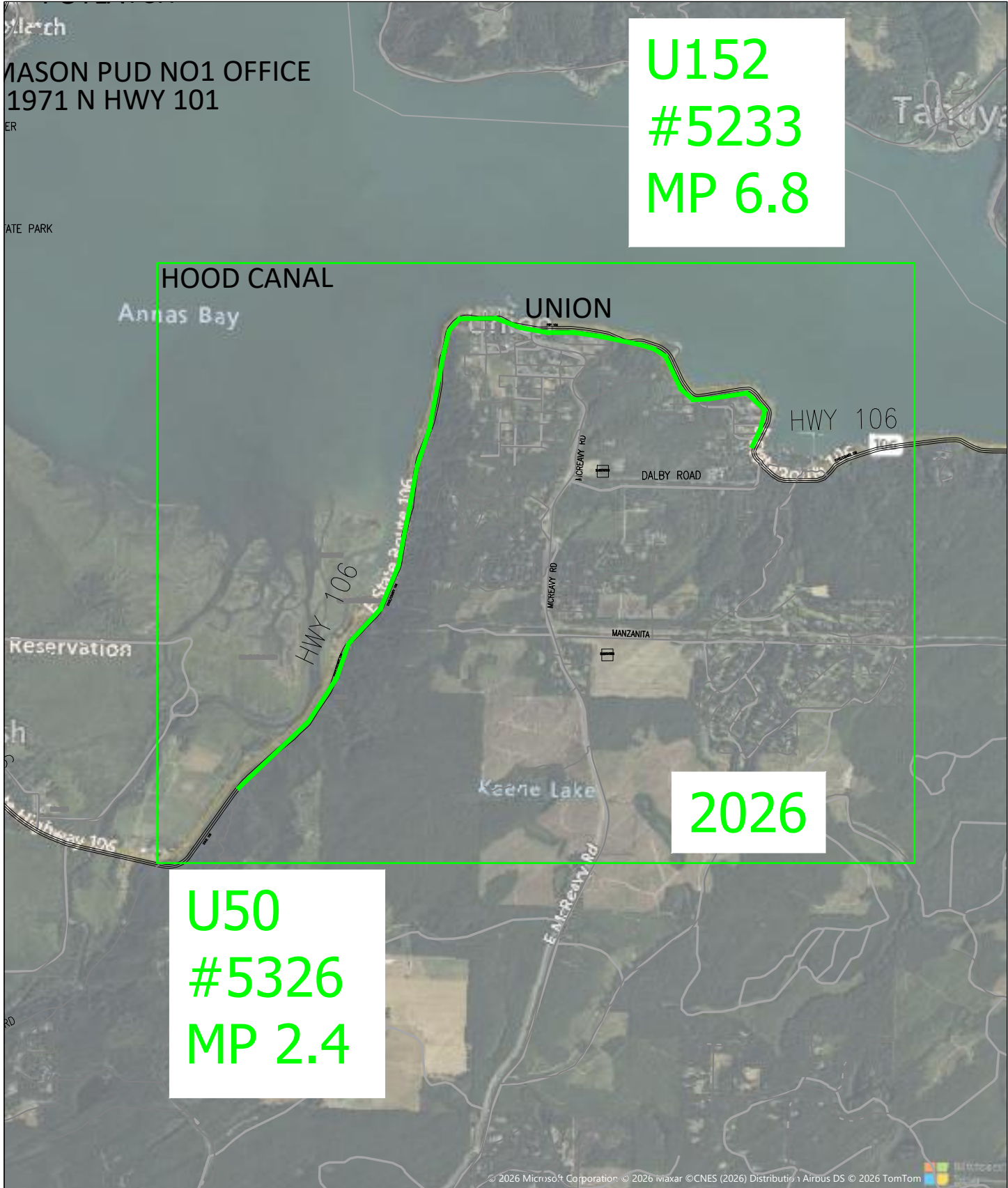
© 2021 Microsoft Corporation © 2025 Maxar © CNES (2026) Distribution Airbus DS © 2026 TomTom



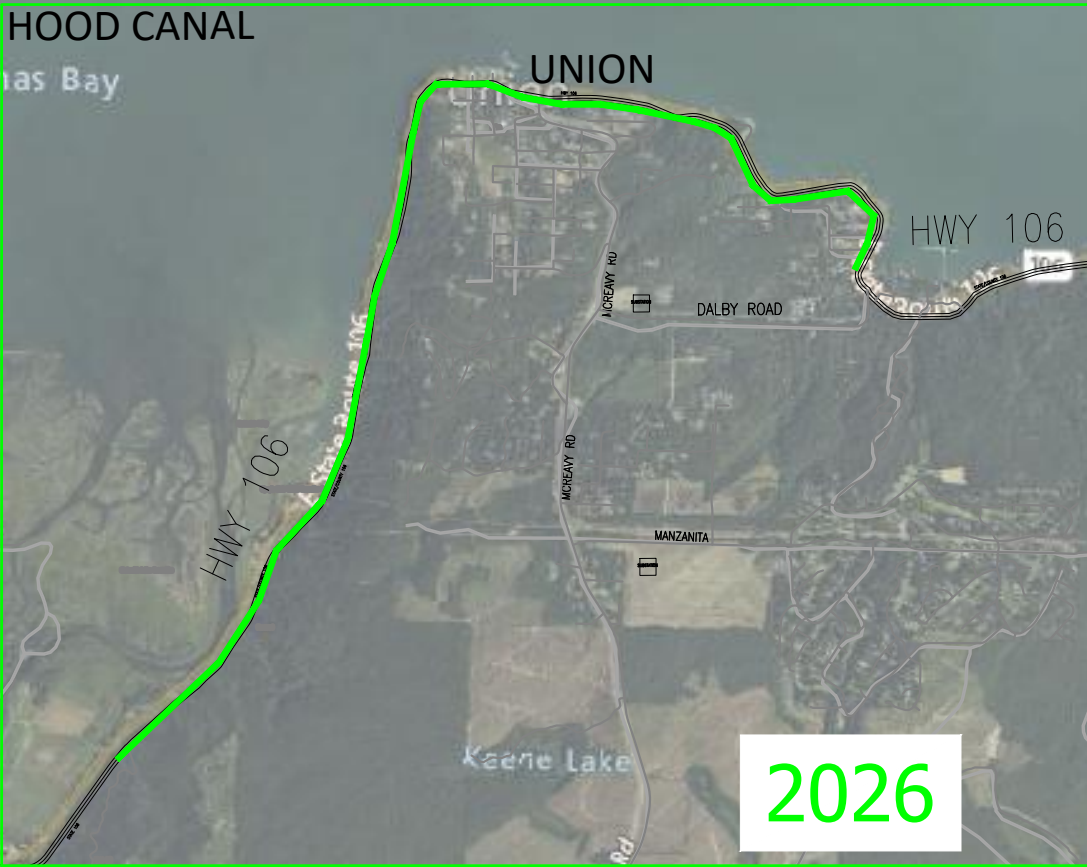
TREE TRIMMING 2026 ATTACHMENT C

PUBLIC UTILITY DISTRICT NO.1 of MASON COUNTY
 21971 N. HWY 101 (Potlatch) SHELTON, WA 98584

SHEET: #	OF #	REV NO
3	OF 4	0

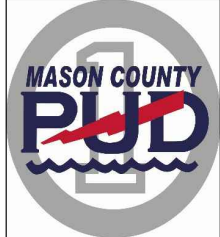


U152
#5233
MP 6.8



2026

U50
#5326
MP 2.4



TREE TRIMMING 2026 ATTACHMENT D

PUBLIC UTILITY DISTRICT NO.1 of MASON COUNTY
21971 N. HWY 101 (Potlatch) SHELTON, WA 98584

SHEET: #	OF #	REV NO
4	OF 4	0